



PEMSERTER® IN-DIE FASTENER FEEDING SYSTEM

- Eliminate secondary operations
- Reduce costs
- Improve quality
- Speed production



Multiple configurations shown above.

PEMSERTER® IN-DIE FASTENER FEEDING SYSTEM

The PEMSERTER in-die fastener feeding system brings new dimensions to stamping capabilities. It incorporates the latest technologies to deliver the performance that is needed to compete in the highly competitive stamping industry. It eliminates the secondary operations typically required for fastener insertion, thus reducing overall labor costs, improving part quality and dramatically improving product through put.

Benefits of using the in-die fastener feeding system are:

- Increased productivity.
- Increased quality.
- Cost effective.
- Reduced inventory/WIP.
- Reduced manufacturing lead times.

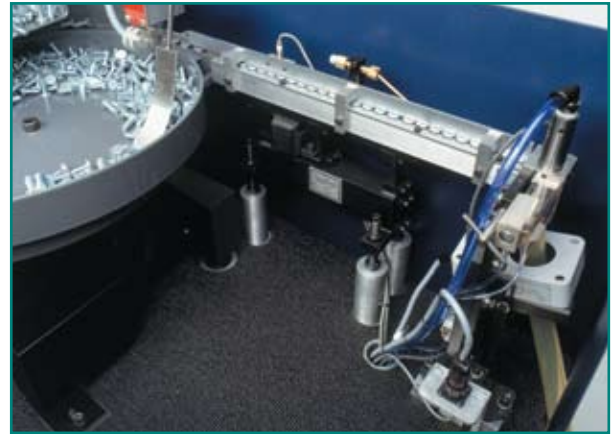
Recognizing the need for flexibility, the system can be configured to feed nuts, studs, and/or standoffs for multiple or single insertions, generally matching the stamping press rate.

As designed, the system interfaces with the die and the press with surprising ease. Through the use of multi pin twist lock connectors it is virtually plug and play. All that is needed to operate the system is a standard 110V receptacle and shop air.

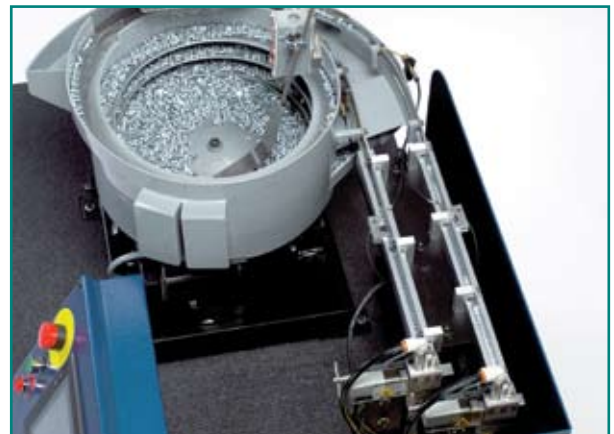
Other advantages are that the standard tooling is in press removable and can handle complex work pieces reaching into areas generally considered inaccessible. Additionally, if required special tooling can be engineered to fit your specific application.

During operation the operator is guided through the process by the touch screen operator interface and the on-line library of fault/help screens.

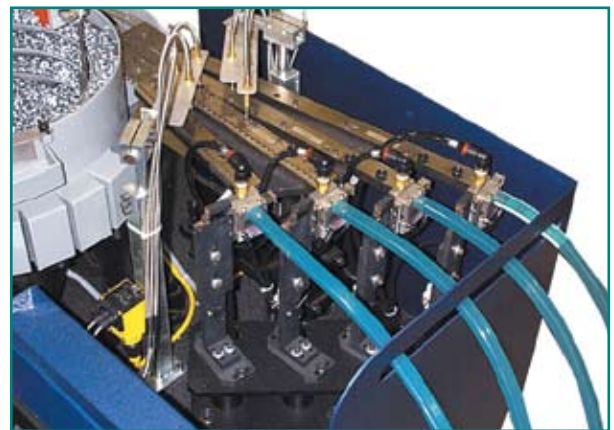
The complete in-die fastener feeding system consists of the die tooling, fastener-feeding system module, the die-sensing module, and the support needed to make every project a success.



Precision track system properly orients fasteners.



System equipped with quick change tooling.



System can be configured for single or multiple insertions.

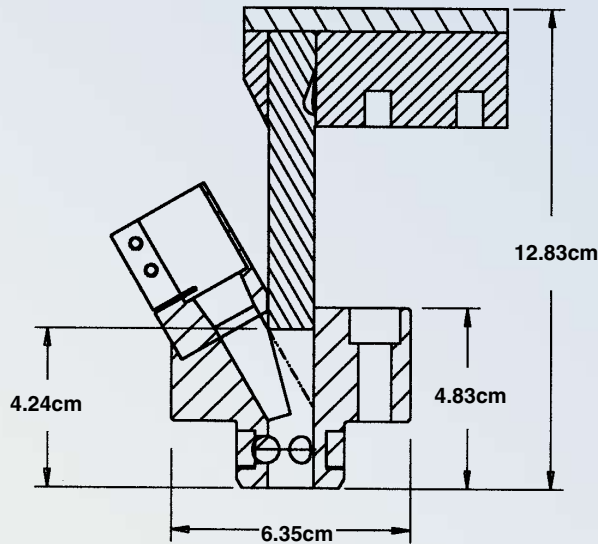


Uses standard 110V supply and shop air to operate. Adjustable controls are easily accessible through the secured access door.

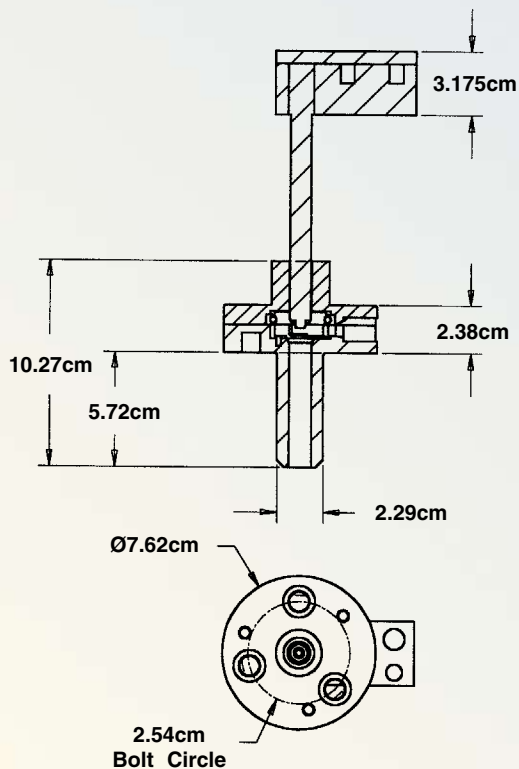
IN-DIE TOOLING

- In press removable tooling that saves set-up time.
- Fastener installation can be performed from top or bottom of the die.
- Fasteners installed in areas previously considered inaccessible.
- Inspection stations verify fastener presence after installation on every press cycle.

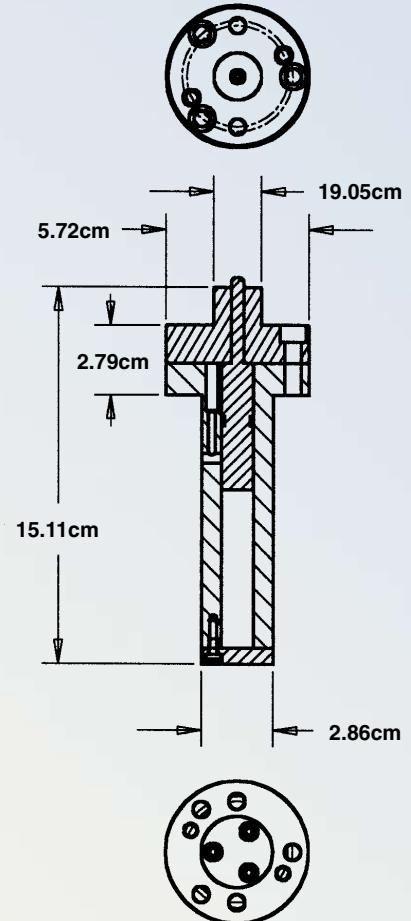
STUD INJECTOR ASSEMBLY



NUT INJECTOR ASSEMBLY



NUT/STUD ANVIL ASSEMBLY

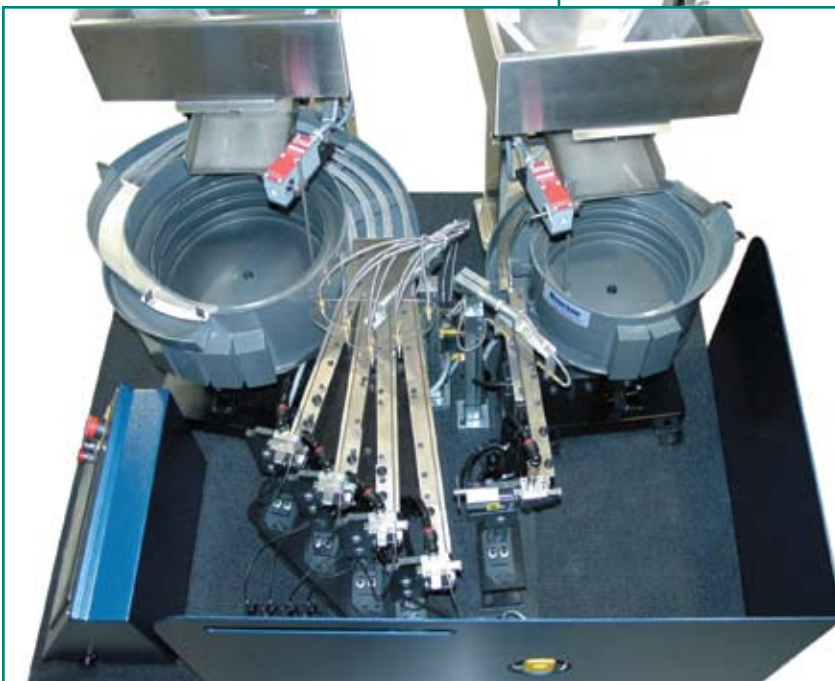


FLEXIBLE AND EXPANDABLE



The system has the unique ability to be expanded for future applications. Select the expansion port option at time of order.

Expand the master system with the addition of an In-die PLUS module to add additional fastener feeding capabilities (example, add a stud to a multiple nut system, or add a nut to a multiple stud system.) Simply connect the fastener delivery tubing to the die and the communication connector to the master system and enter the new configuration into the touch screen control.



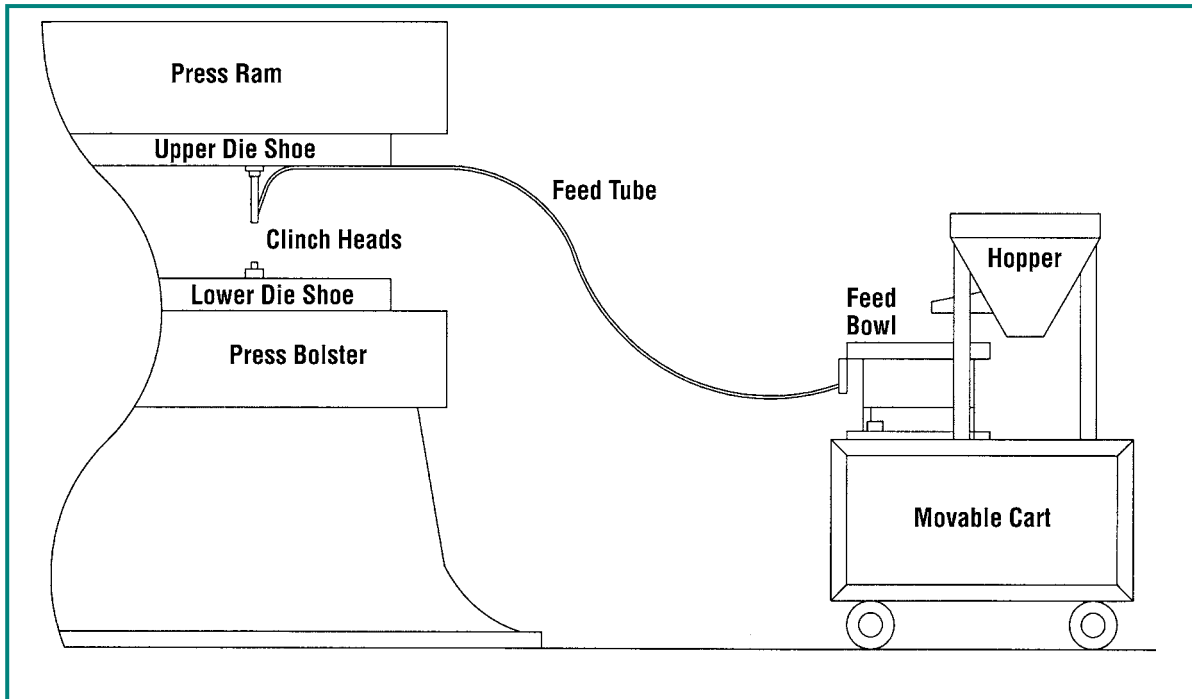
Can be equipped with multiple bowls or multiple configurations at time of order for a one piece system.

IN-DIE FASTENER FEEDING SYSTEM FEATURES

- Can be easily moved from press to press.
- In press removable tooling can be easily removed for maintenance.
- Easy interface with existing press controls.
- Touch Screen operator interface.
- Self-diagnostics with extensive library of help screens.



CONFIGURATION WITH A STAMPING PRESS



CUSTOM APPLICATIONS

Custom designs such as the punch assembly shown below can be offered to meet the needs of a specific customer application. Please call us for more information about your requirements. We will be happy to assist you to design the proper tool for your assembly.



*Specifications subject to change without notice.
Check our website for the most current version of this bulletin.*

PennEngineering®



North America: Danboro, PA USA • E-mail: info@pemnet.com • Tel: +1-215-766-8853 • Fax: +1-215-766-0143 • 800-237-4736 (USA Only)
Europe: Galway, Ireland • E-mail: europe@pemnet.com • Tel: +353-91-751714 • Fax: +353-91-753541
Asia/Pacific: Singapore • E-mail: singapore@pemnet.com • Tel: +65-6-745-0660 • Fax: +65-6-745-2400
Shanghai, China • E-mail: china@pemnet.com • Tel: +86-21-5868-3688 • Fax: +86-21-5868-3988

Visit our PEMNET™ Resource Center at www.pemnet.com

© 2009