

# SpotFast™ Performance Data

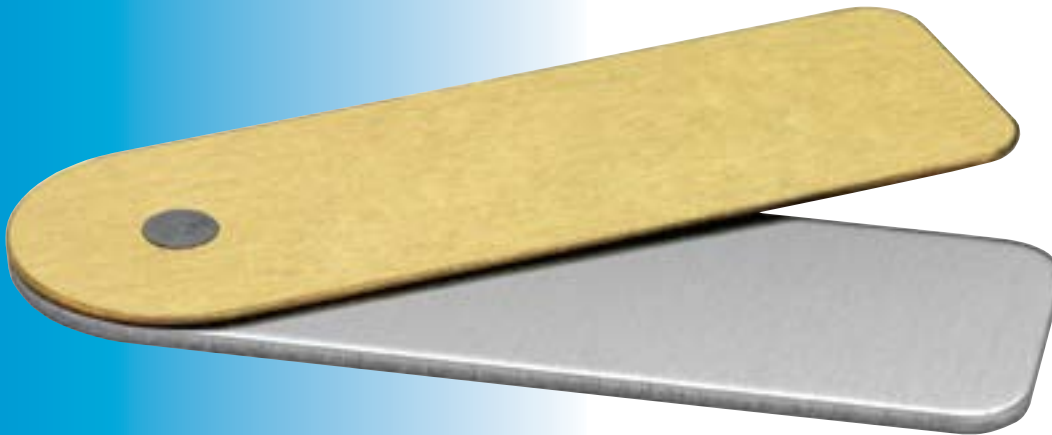
*The data presented here is for general comparison purposes only. Actual performance is dependent upon application variables. We will be happy to provide samples for you to install. If required, we can also test your installed hardware and provide you with the performance data specific to your application.*



**Performance Testing For Type SF Fastener**



Type and Size	Thickness Code	5052-H34 Aluminum						Cold-rolled Steel					
		Installation		Pushout		Shear Strength		Installation		Pushout		Shear Strength	
		kN	lbs.	N	lbs.	N	lbs.	kN	lbs.	N	lbs.	N	lbs.
SF-3	0.8	6	1350	200	45	410	92	8	1800	360	80	455	100
SF-3	1.0	6.5	1475	250	55	590	130	9	2025	525	115	670	150
SF-3	1.2	7	1575	310	70	730	165	11	2475	555	125	895	200
SF-3	1.6	7.5	1700	550	125	960	215	13	2925	920	205	1310	295
SF-5	0.8	8	1800	310	70	730	165	11	2475	625	140	975	220
SF-5	1.0	9.5	2150	515	115	1090	245	12	2700	800	180	1465	330
SF-5	1.2	10	2250	770	170	1235	275	18	4050	1200	270	1900	430
SF-5	1.6	12.5	2825	1145	255	1645	370	20	4500	1500	335	2415	545



**PennEngineering®**

[www.pemnet.com](http://www.pemnet.com)

**North America:** Danboro, PA USA • E-mail: [info@pemnet.com](mailto:info@pemnet.com) • Tel: +1-215-766-8853 • Fax: +1-215-766-0143 • 800-237-4736 (USA Only)  
**Europe:** Galway, Ireland • E-mail: [europe@pemnet.com](mailto:europe@pemnet.com) • Tel: +353-91-751714 • Fax: +353-91-753541  
**Asia/Pacific:** Singapore • E-mail: [singapore@pemnet.com](mailto:singapore@pemnet.com) • Tel: +65-6-745-0660 • Fax: +65-6-745-2400  
 Shanghai, China • E-mail: [china@pemnet.com](mailto:china@pemnet.com) • Tel: +86-21-5868-3688 • Fax: +86-21-5868-3988