

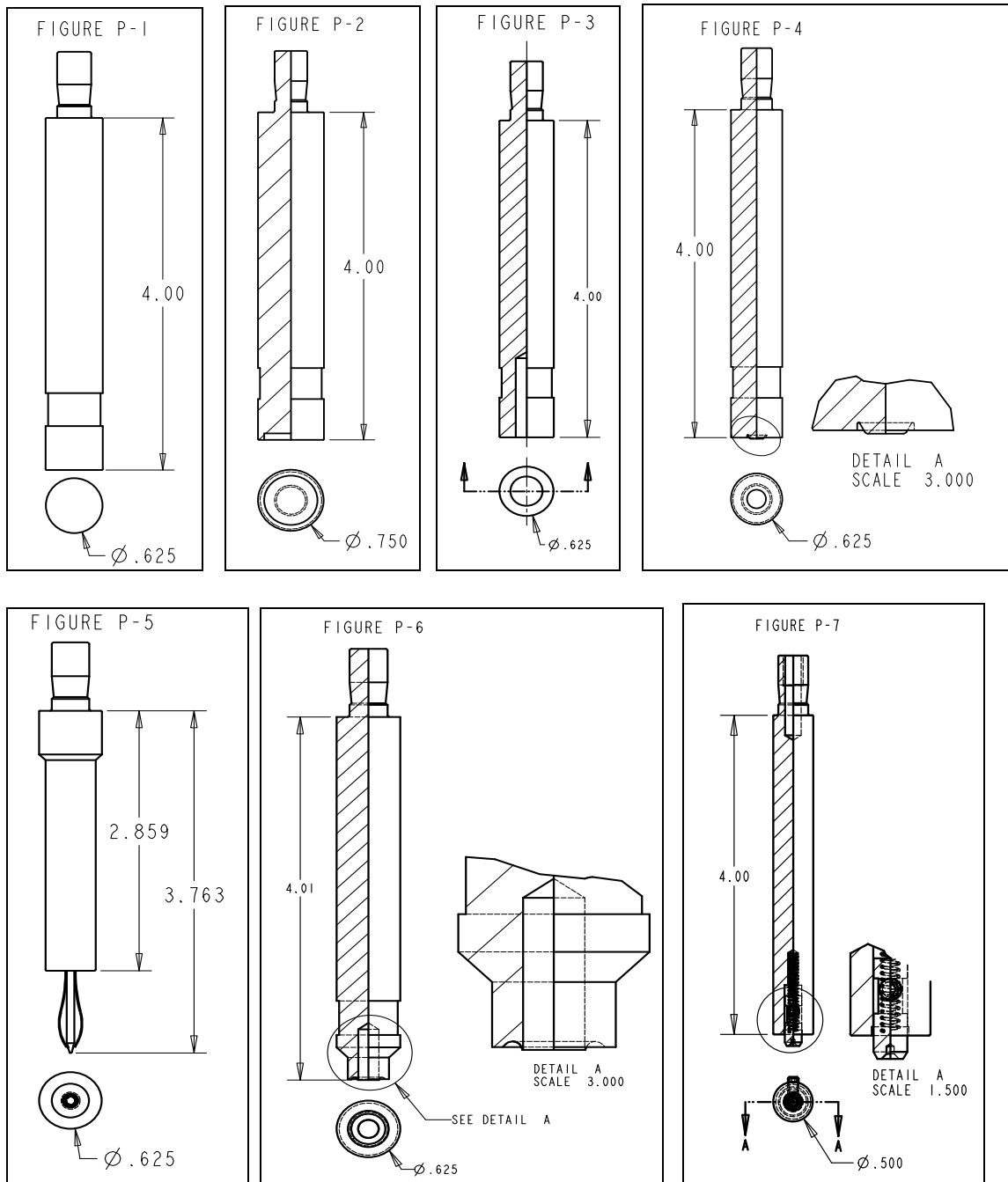
## CONTENTS

	FASTENER DESCRIPTION	PAGE
◆ <i>IDENTIFICATION DRAWINGS</i>	MANUAL PUNCH AND ANVIL ASSEMBLIES .....	4-7
◆ <i>AS,AC, LAS, LAC</i>	SELF-CLINCHING FLOATING .....	8
◆ <i>A4, LA4</i>	STAINLESS SELF-CLINCHING FLOATING.....	8
◆ <i>B, BS</i>	BLIND NUT .....	8
◆ <i>CFN, SLPS</i>	CONNECT'R WARE FASTENERS .....	8
◆ <i>CHA, CHC, CFHA, CFHC</i>	CONCEALED HEAD STUD .....	8
◆ <i>CLA</i>	ALUMINUM SELF-CLINCHING NUTS.....	9
◆ <i>CLS, CLSS, S, SS,</i>	SELF-CLINCHING NUTS .....	9
◆ <i>CSOS, CSS</i>	CONCEALED HEAD STANDOFF .....	9
◆ <i>DPRS, DBRS</i>	WAVEGARD GROUNDING .....	9
◆ <i>DSOS</i>	THREADED STANDOFF CLOSE-TO-EDGE APPLICATIONS.....	9
◆ <i>F</i>	FLUSH NUTS.....	10
◆ <i>FE, FEO, FEX, FEO</i>	MINIATURE SELF-LOCKING NUTS.....	10
◆ <i>FH, FHA, FHS</i>	FLUSH STUDS .....	10
◆ <i>FHL, FHLS</i>	FLUSH STUDS FOR CLOSE-TO-EDGE APPLICATIONS.....	11
◆ <i>FH4</i>	SERIES 400 STAINLESS FLUSH STUDS .....	11
◆ <i>FHP</i>	STAINLESS FLUSH STUDS .....	11
◆ <i>FHX</i>	FLUSH STUDS WITH X-PRESS™ THREADS.....	11
◆ <i>HFE</i>	HIGH STUDS .....	12
◆ <i>HFH, HFHS, HFHB</i>	HIGH STRENGTH STUDS .....	12
◆ <i>TFH, TFHS</i>	NON FLUSH THIN SHEET.....	12
◆ <i>H, HN, HNL</i>	SELF-LOCKING & NON-LOCKING NUTS .....	13
◆ <i>KF2, KFS2</i>	BROACHING NUTS .....	13
◆ <i>KFB3</i>	FLARE-MOUNTED THREADED STANDOFF .....	13
◆ <i>KFE, KFSE</i>	BROACHING STANDOFF .....	14
◆ <i>KFH</i>	BROACHING STUDS .....	14
◆ <i>KPS6</i>	SELF-EXPANDING FOILGUARD FASTENERS .....	15
◆ <i>KSSB</i>	BROACHING SNAP-TOP STANDOFFS .....	15
◆ <i>LK, LKS, LKA</i>	SELF-LOCKING NUTS .....	15

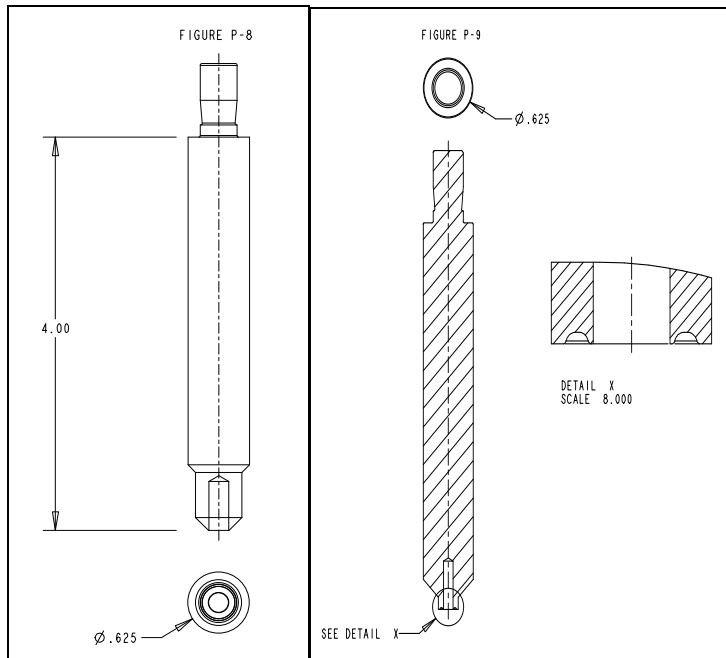
	<b>FASTENER DESCRIPTION</b>	<b>PAGE</b>
◆	<i>NFPC, NFPA</i>	INSERTS FOR PLASTICS ..... 16
◆	<i>PFC2, PFC2P, PFC4, PFF, PF11MW, PFK, PFS2, PF11, PF11PM, PF11MF, PF12, PF13, PF14, PFHV, PF30, PF31, PF32, PF10, PF50, PF60,</i>	PANEL FASTENERS..... 16-17
◆	<i>PFHV</i>	PANEL FASTENERS..... 18
◆	<i>PFV, PFS</i>	SNAP-IN PANEL FASTENERS ..... 18
◆	<i>PL, PLC</i>	PEM-HEX® SELF-LOCKING NUTS ..... 18
◆	<i>PTL2</i>	SPRING-LOADED PLUNGER ASSEMBLIES ..... 18
◆	<i>RAA, RAS</i>	RIGHT ANGLE CLINCH FASTENER ..... 18
◆	<i>SCB/SCBJ</i>	SPINNING CLINCH BOLT..... 19
◆	<i>SF, SFP</i>	SPOT FASTENER ..... 19
◆	<i>SFK</i>	SPOT FASTENER EXTRUSION..... 19
◆	<i>SFW</i>	SPOT FASTENER..... 19
◆	<i>SKC</i>	KEYHOLE® STANDOFFS ..... 19
◆	<i>SL</i>	SELF-CLINCHING LOCKNUTS ..... 20
◆	<i>SMPS</i>	SELF-CLINCHING NUTS –ULTRA THIN SHEET ..... 20
◆	<i>SO, SOA, SOS, SON, BSO, BSOA, BSOS, BSON, SOAG, SOSG</i>	STANDOFFS ..... 20
◆	<i>SP</i>	300 STAINLESS STEEL SELF-CLINCHING NUTS ..... 21
◆	<i>SSA, SSS, SSC, KSSB</i>	SNAP-TOP STANDOFFS ..... 21
◆	<i>TDO</i>	SELF-CLINCHING CABLE-TIE HOOKS ..... 21
◆	<i>TPS, TPXS, TP4</i>	FLUSH-MOUNTED PILOT PINS ..... 22
◆	<i>TSO</i>	THREADED STANDOFFS FOR THIN SHEETS ..... 22
◆	<i>TY-D</i>	CABLE TIE-MOUNT FASTENERS ..... 22
◆	<i>U, UL</i>	MINIATURE SELF-CLINCHING FASTENERS ..... 23
◆		TURRET ANVILS..... 23
◆		QX4™ TURRET TOOL SYSTEM ..... 24
◆		BOTTOM MOUNT REVERSE FLANGE ANVIL HOLDER FOR SERIES 4 & LT/4 PRESS ..... 24
◆		TOP MOUNT REVERSE FLANGE ANVIL HOLDER FOR SERIES 4 PRESS ..... 24
◆		TOP MOUNT REVERSE FLANGE ANVIL HOLDER FOR SERIES 2000 PRESS ..... 25
◆		WORKPIECE ALIGNMENT PLATES KIT ..... 25

♦	TOOLING AND ANVIL ADAPTERS.....	25
	<b>FASTENER DESCRIPTION</b>	<b>PAGE</b>
♦	SWAGE STANDOFFS.....	26-27
♦	PRESS ACCESSORIES.....	28

**PUNCH ASSEMBLY DRAWINGS**

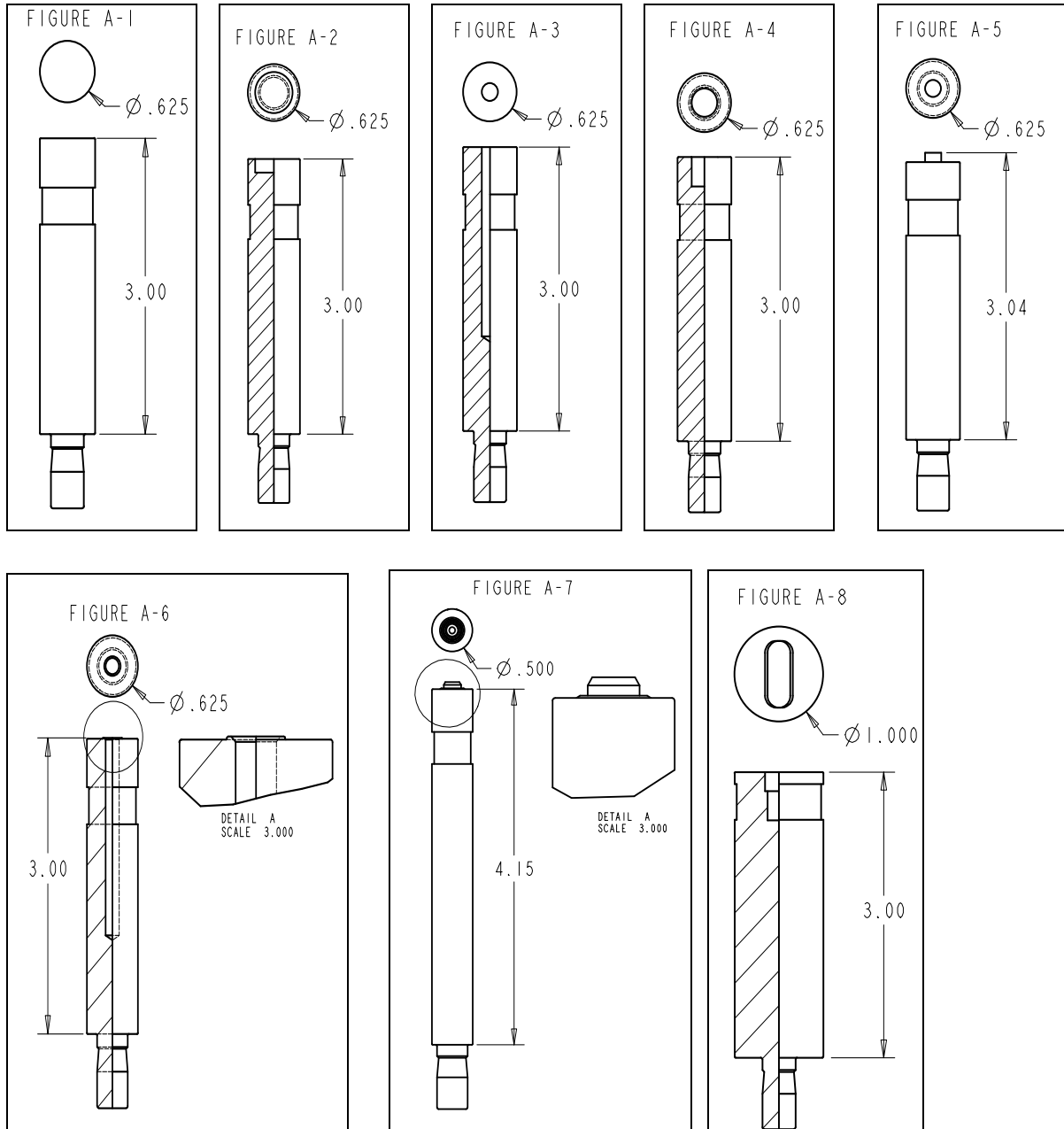


**\* Standard Length for Punches is 4" (101.6mm) and Anvils 3" (76.2mm). Most punches and anvils are 5/8" (15.9mm) in diameter. All are designed to fit the 3/8" (9.5mm) punch and anvil adapters of Pemsertter<sup>®</sup> presses. All tooling includes yellow shrink tubing in groove as warning for possible pinch point.**



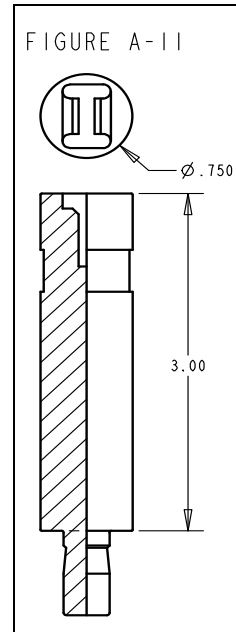
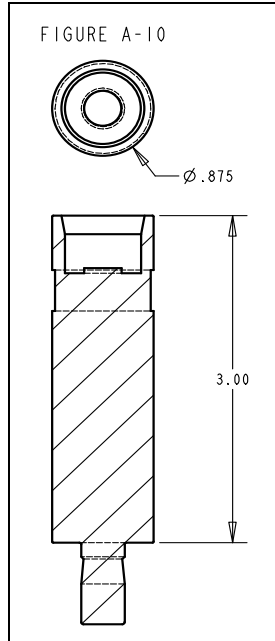
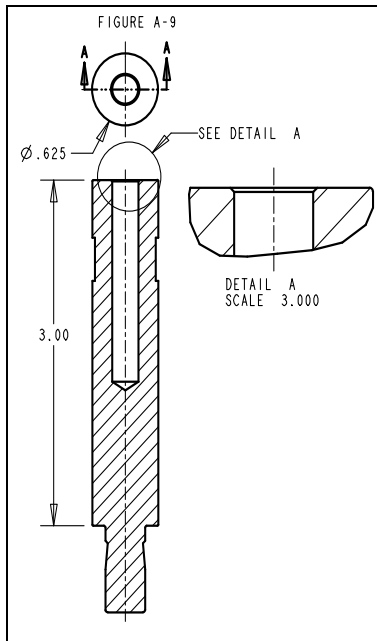
**\* Standard Length for Punches is 4" (101.6mm) and Anvils 3" (76.2mm). Most punches and anvils are 5/8" (15.9mm) in diameter. All are designed to fit the 3/8" (9.5mm) punch and anvil adapters of Pemsarter<sup>®</sup> presses. All tooling includes yellow shrink tubing in groove as warning for possible pinch point.**

**ANVIL ASSEMBLY DRAWINGS**



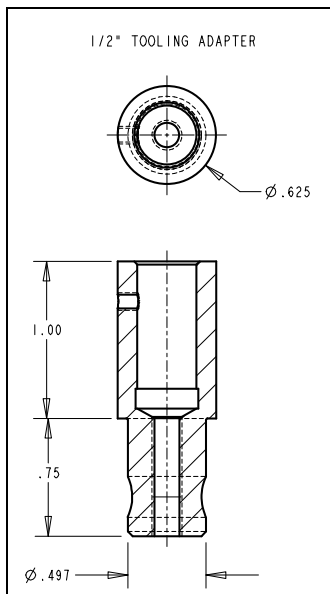
**\* Standard Length for Punches is 4" (101.6mm) and Anvils 3" (76.2mm). Most punches and anvils are 5/8" (15.9mm) in diameter. All are designed to fit the 3/8" (9.5mm) punch and anvil adapters of Pemserter<sup>®</sup> presses. All tooling includes yellow shrink tubing in groove as warning for possible pinch point.**

**ANVIL ASSEMBLY DRAWINGS ( Continued)**

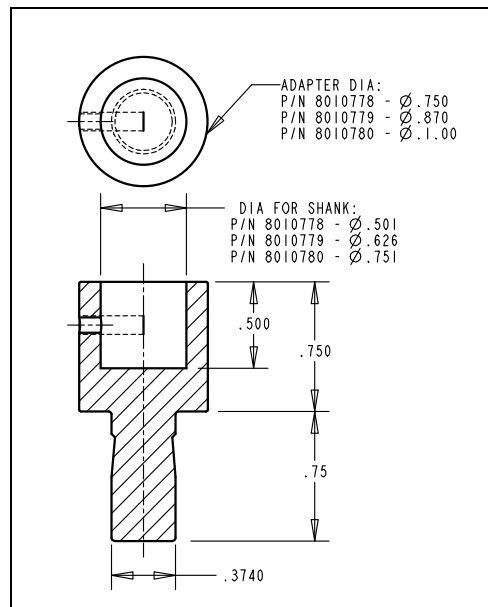


**\* Standard Length for Punches is 4" (101.6mm) and Anvils 3" (76.2mm). Most punches and anvils are 5/8" (15.9mm) in diameter. All are designed to fit the 3/8" (9.5mm) punch and anvil adapters of Pemsrter<sup>®</sup> presses. All tooling includes yellow shrink tubing in groove as warning for possible pinch point.**

**1/2" Tooling Adapter –  
P/N 8007647**



**Anvil Adapter –  
P/N 8010778, 8010779 & 8010780**



**IDENTIFY YOUR PRESS** – THE SERIAL NUMBER IS LOCATED ON THE COVER OF THE INSTRUCTION MANUAL OR ON THE PEMSERTER® PRESS NAMEPLATE

**AS, AC, LAS, LAC** PEM® SELF-CLINCHING FLOATING – BULLETIN ALA

Size	Punch	Anvil
440/M3	975200048	975200006
632/M3.5		8013890
832/M4		975200008
1032/M5		975200009
0420/M6		975200010

*Figure P-1*

*Figure A-4*

**A4, LA4** PEM® STAINLESS SELF-CLINCHING FLOATING – BULLETIN ALA

Size	Punch	Anvil
440/M3	975200048	8013889
632/M3.5		8013890
832/M4		8013891
1032/M5		8013892

*Figure P-1*

*Figure A-4*

**B, BS** PEM® BLIND NUT – BULLETIN B

Size	Punch	Anvil
440/M3	975200048	975200001
632/M3.5		975200002
832/M4		975200003
1032/M5		975200004
0420/M6		975200005

*Figure P-1*

*Figure A-4*

**CFN, SLPS** PEM® CONNECTOR WARE FASTENERS – BULLETIN CW

Size	Punch	Anvil
440/M3	975200048	8012038
	Figure P-1	Figure A-4

**CHA, CHC, CFHA, CFHC** PEM® CONCEALED-HEAD STUD – BULLETIN CH

Size	Punch	Anvil
440	975200048	970200006300
632/M3.5		970200007300
832		970200008300
1032		970200009300
M3		970200229300
M4		970200019300
M5		970200020300

**NOTE: THESE ANVILS ARE SAME AS FH ANVILS**

*Figure P-1*

*Figure A-3*

**CLA** PEM® ALUMINUM SELF-CLINCHING NUTS – BULLETIN CL

Size	Punch	Anvil
256/440/M2/M3	975200048	975200034
632/M3.5		975200035
832/M4		975200036
1032/M5		975200782300
0420/M6		975200038

**NOTE: THESE ANVILS ARE SAME AS CLS, S ANVILS EXCEPT FOR 1032/M5.**

*Figure P-1*

*Figure A-2*

**CLS, CLSS, S, SS** PEM® SELF-CLINCHING NUTS – BULLETIN CL

Size	Punch	Anvil
256/440/M2/M3	975200048	975200034
632/M3.5		975200035
832/M4		975200036
1032/M5		975200037
12-24		975200786300
0420/M6		975200038
0518/M8		975200039
0616		975200045*
M10	975200901400	8005682*
0813/M12		975200900300*

Punch 13/16" (20.6mm) & Anvil 3/4" (19mm) dia

Punch & Anvil 13/16"(20.6mm) dia

*Figure P-1*

*Figure A-2 / \*Figure A-5*

\*LARGE NUT ANVILS INSTEAD OF COUNTER BORE, USE PROTRUSION TO LOCATE PART.

**CSOS, CSS** PEM® CONCEALED-HEAD STANDOFF – BULLETIN CH

Size	Punch	Anvil
440/M3	975200048	970200014300
632/M3.5		970200015300
832/M4		970200016300
1032/M5		970200017300
0420/M6		970200018300

**NOTE: THESE ANVILS ARE DIFFERENT THAN SO ANVILS**

*Figure P-1*

*Figure A-3*

**DPRS, DBRS** PEM® WAVEGARD GROUNDING – BULLETIN DR

PACKAGE CONTAINS 2 PUNCHES AND 1 ANVIL	975201209
<i>Anvil DBRS/DPRS – 975201224 : Punch DBRS – 975201208 : Punch DPRS – 975201225</i>	

**DSOS** PEM® THREADED STANDOFF FOR CLOSE-TO-EDGE APPLICATIONS – BULLETIN SO

Size	Punch	Anvil
440/M3	975200048	970200487300

*Figure P-1*

*Figure A-4*

**F** PEM® FLUSH NUTS – BULLETIN F

Size	Punch	Anvil
256/M2/M2.5	975200048	8006193
440/M3		975200040
632/M3.5		975200041
832/M4		975200042
1032/M5		975200043
0420/M6		975200044

*Figure P-1*

*Figure A-5*

**FE, FEO, FEX, FEO** PEM® MINIATURE, SELF-LOCKING NUTS – BULLETIN FE

Size	Punch	Anvil
440/M3	975200048	975200021
632/M3.5		975200022
832/M4		975200023
1032/M5		975200024
0420		975200025
M6		8013143

*Figure P-1*

*Figure A-4*

**FH, FHA, FHS** PEM® FLUSH STUDS – BULLETIN FH

Size	Punch	Anvil	
		For material .060" +/1.51mm+	For material <= .059"/1.5mm
256	975200048	970200005300	970200240300
440		970200006300	970200241300
632/M3.5		970200007300	970200243300
832		970200008300	970200245300
1032/024		970200009300	970200246300
0420		970200010300	970200249300
M2		8008451	8008452
M2.5		970200300300	970200493300
M3		970200229300	970200242300
M4		970200019300	970200244300
M5		970200020300	970200247300
M6		970200230300	970200248300
			For material .075" +/1.9mm+
0518	975200048	970200011300	970200250300
M8		970200231300	970200251

*Figure P-1*

*Figure A-4*

*Figure A-9*

**FHL, FHLS** PEM® FLUSH STUDS FOR CLOSE-TO-EDGE & MINIMAL SPACE APPLICATIONS  
BULLETIN FH

Size	Punch	Anvil For material .060"+/1.51mm+	Anvil For material <= .059"/1.5mm
256	975200997	8003313	8003297
440		8003618	8003298
632		8003314	8003299
832		8003315	8003300
1032		8003619	8003301
M2.5	975200997	8003316	8003302
M3		8003317	8003303
M3.5		8003318	8003304
M4		8003620	8003305
M5		8003319	8003306

*Figure P-1 –  
1/2" (12.7mm) dia*

*Figure A-4 -  
1/2" (12.7mm) dia*

*Figure A-9 –  
1/2" (12.7mm) dia*

**FH4** PEM® SERIES 400 STAINLESS FLUSH STUDS – BULLETIN FH

**FHP** PEM® A286 STAINLES STEEL FLUSH STUDS – BULLETIN FHP

Size	Punch	Anvil
440	975200048	8001645
632		8001644
832		8001643
1032		8001642
0420		8002535
M3		8001678
M4		8001677
M5		8001676
M6		8002536

*Figure P-1*

*Figure A-6*

**FH-X** PEM® FLUSH STUDS WITH X-PRESS™ THREADS – BULLETIN FHX

Size	Punch	Anvil For material .060"+/1.51mm+	Anvil For material <= .059"/1.5mm
X5	975200048	970200020300	970200247300

*Figure P-1*

*Figure A-4*

*Figure A-9*

### HFE PEM® HIGH STUDS – BULLETIN FH

Size	Punch	Anvil For material .060"/+1.51mm+	Anvil For material .040/1mm -.059"/1.5mm
1032	8003707	970200009300	970200246300
0420	8003708	970200010300	8003702
M5	8003710	970200020300	8003704
M6	8003711	970200230300	8003705
		For material .093"/+2.4mm+	For material .060/1.5mm -.093"/2.4mm
*0518	8003709	970200011300	8003703
*M8	8003712	970200231300	8003706

*Figure P-2*

*Figure A-4*

*Figure A-9*

\*INSTALLATION FORCE MAY EXCEED CAPABILITIES OF SOME PEMSERTER® PRESSES SHOWN IN THIS TOOLING GUIDE. Punch and Anvil ¾" (19mm) dia.

### HFH, HFHS, HFHB PEM® HIGH STRENGTH STUDS – BULLETIN FH

Size	Punch		Anvil
1032	970200311400		970200009300
0420	970200312400	Punch ¾" (19mm) dia	970200010300
0518	970200313400	Punch ¾" (19mm) dia	970200011300
0616	970200314400	Punch 15/16" (23.8mm) dia	970200004300
M5	970200311400		970200020300
M6	970200312400	Punch ¾" (19mm) dia	970200230300
M8	970200313400	Punch ¾" (19mm) dia	970200231300
M10	970200491400	Punch 15/16" (23.8mm) dia	970200402300
M12	8011046	Punch 1.10" (28mm) dia	8011047

*Figure P-2*

*Figure A-4*

### TFH, TFHS PEM® NON FLUSH THIN SHEET – BULLETIN FH

Size	Punch	Anvil For material .030"/+.76mm+	Anvil For material .020"/.51mm - .029"/.75mm
256	970200235400	970200005300	970200240300
440	970200236400	970200006300	970200241300
632/M3.5	970200237400	970200007300	970200243300
832	970200238400	970200008300	970200245300
1032	970200239400	970200009300	970200246300
0420	970200496400	970200010300	970200249300
M3	970200236400	970200229300	970200242300
M4	970200238400	970200019300	970200244300
M5	970200239400	970200020300	970200247300
M6	970200496400	970200230300	970200248300

*Figure P-2*

*Figure A-4*

*Figure A-9*

### H, HN, HNL PEM® SELF-LOCKING AND NON-LOCKING NUTS – BULLETIN CL

Size	Punch	Anvil
0420/M6	975200048	975200039
0518/M8	975200048	975200783300*
0616/M10	8003076	975201240*

Anvil ¾” (19mm) dia

*Figure P-1*                      *Figure A-2* / *\*Figure A-5*

\*LARGE NUT ANVILS USE PROTRUSION TO LOCATE PART INSTEAD OF COUNTER BORE.

### KF2, KFS2 PEM® BROACHING NUTS – BULLETIN K

Size	Punch	Anvil
256/440/M2/M2.5/M3	975200048	975200904300
632/M3.5	975200048	975200035
832/M4	975200048	975200037
1032/M5	975200048	975200905300

*Figure P-1*                      *Figure A-2*

### KFB3 PEM® FLARE-MOUNTED THREADED STANDOFF – BULLETIN K

Size	Punch	Anvil
440 -2	975201231400 (Fig.P-4)	975201213300
440 -4 to -8		975200846300
440 -10 to -12		975200847300
440 -16 to -20		975200848300
440 -22 to -24		975200882300
M3 -2		975201213300
M3 -3 to -6		975200846300
M3 -8 to -10		975200847300
M3 -12 to -14		975201222300
M3 -14 to -16		975200848300
632 -2	975201232400 (Fig.P-4)	975201215300
632 -4 to -8		975200849300
632 -10 to -12		975200850300
632 -16 to -20		975200851300
632 -22 to -24		975200883300
632 -28 to -32		975200884300
M4 -2	975201221400	975201216300
M4 -3 to -6		975201217300
M4 -8 to -10		975201218300
M4 -12 to -14		975201220300
M4 -14 to -16		975201219300

*Figure P-7 / Figure P-4*                      *Figure A-2*

**KFE, KFSE** PEM<sup>®</sup> BROACHING STANDOFF – BULLETIN K

Size	Punch	Anvil	
440/116 -4 to -8	975200048	975200846300	
440/116 -10 to -12		975200847300	
440/116 -16 to -20		975200848300	
440/116 -20 to -24		975200882300	
M3 -3 to -6		975200846300	
M3 -8 to -10		975200847300	
M3 -12 to -14		975201222300	
M3 -14 to -16		975200848300	
632/143 -4 to -8		975200849300	
632/143 -10 to -12		975200850300	
632/143 -16 to -20		975200851300	
632/143 -22 to -24		975200883300	
632/143 -28 to -32		975200884300	
3.6 -3 to -6		975200048	975200849300
3.6 -8 to -10			975200850300
3.6 -12 to -16	975200851300		
4.2 -2	975201216300		
4.2 -3 to -6	975201217300		
4.2 -8 to -10	975201218300		
4.2 -12 to -14	975201220300		
4.2 -14 to -16	975201219300		

*Figure P-1*

*Figure A-2*

**KFH** PEM<sup>®</sup> BROACHING STUDS – BULLETIN K

Size	Punch	Anvil
440	975200048	970200006300
632		970200007300
832		970200008300
1032		970200009300
M3		970200229300
M4		970200019300
M5		970200020300

*Figure P-1*

*Figure A-4*

**KPS6** PEM® SELF-EXPANDING FOILGUARD® FASTENERS – BULLETIN K

Size	Punch	Anvil
440 (-4 TO -8)	975200048	975200846300
440 (-10 TO -12)		975200847300
440 (-16 TO -20)		975200848300
632 (-4 TO -8)		975200849300
632 (-10 TO -12)		975200850300
632 (-16 TO -20)		975200851300
832 (-4 TO -8)		975201217300
832 (-10 TO -12)		975201218300
832 (-16 TO -20)		975201220300
1032 (-4 TO -8)		975201234300
1032 (-10 TO -12)		975201236300
1032 (-16 TO -20)		975201237300
M3 (-3 TO -6)		975200846300
M3 (-8 TO -10)		975200847300
M3 (-12 TO -14)		975200848300
M4 (-3 TO -6)		975201217300
M4 (-8 TO -10)		975201218300
M4 (-12 TO -14)		975201220300
M5 (-3 TO -6)		975201234300
M5 (-8 TO -10)		975201236300
M5 (-12)	975201237300	

*Figure P-1*

*Figure A-2*

**KSSB** PEM® BROACHING SNAP-TOP STANDOFFS– BULLETIN SSA

Size	Punch	Anvil
156 (-8 TO -32) 4mm (-8 TO -25)	975200048	970200015300

*Figure P-1*

*Figure A-4*

**LK, LKS, LKA** PEM® SELF-LOCKING NUTS– BULLETIN LK

Size	Punch	Anvil
2-56/M2.5	975200048	975200015
440/M3		975200016
632		975201242
832/M4		975201241
1032/M5		975200019

*Figure P-1*

*Figure A-4*

**NFPC, NFPA PEM® INSERTS FOR PLASTICS – BULLETIN SI**

Size	Punch	Anvil
ALL SIZES	975200048	975200046

*Figure P-1*

*Figure A-11*

**FLUSH-MOUNTED PANEL SCREW COMPONENTS**

**PF10 COMPONENTS – BULLETIN PF**

**PR10 – FLUSH-MOUNTED RETAINER**

Size	Punch	Anvil
440/M3	975200048	970200013300
632		970200011300
832/M4		970200393300
1032/M5		970200004300

*Figure P-1*

*Figure A-4*

**N10 SELF-CLINCHING RECEPTACLE NUTS**

Size	Punch	Anvil
440/M3	975200048	8006124
632		8006735
832/M4		8006736
1032/M5		8006174

*Figure P-1*

*Figure A-4*

**PF11, PF11PM, PF12, PF13, PF14 PEM® PANEL FASTENER – BULLETIN PF**

Size	Punch	Anvil
440/M3	8003518	8003521
632/M3.5	8003519	8003522
832/M4	8003520	8003523
1032/M5	8004350	8003523
0420/M6	8004352	8004351

*Figure P-3*

*Figure A-2*

**PF11MF PEM® FLARING PANEL FASTENER – BULLETIN PF**

Size	Punch	Anvil
440/M3	8013670	8003521
632/M3.5	8013671	8003522
832/M4	8013672	8003523
1032/M5	8013672	8003523
0420/M6	8013674	8004351

*Figure P-8*

*Figure A-2*

**PF11MW** PEM® PANEL FASTENER W/WASHER

Size	Punch	Anvil
440/M3	8014304	8003521
632/M3.5	8014305	8003522
832/M4	8014306	8003523
1032/M5	8014306	8003523
0420/M6	8014307	8004351

*Figure P-9*

*Figure A-2*

**PF30, PF31, PF32, PF50, PF60** PEM® LOW PROFILE PANEL FASTENER – BULLETIN PF

Size	Punch	Anvil
440/M3	975200060	975201060
632	975200061	975201061
832/M4	975200062	975201062
1032/M5	975200063	975201063
0420/M6	975200064	975201064

*Figure P-3*

*Figure A-2*

**PFC2, PFC2P, PFK, PFS2** PEM® PANEL FASTENER – BULLETIN PF

Size	Punch	Anvil
440/M3	975200060	975200026
632	975200061	975200027
832/M4	975200062	975200028
1032/M5	975200063	975200029
0420/M6	975200064	975200030

*Figure P-3*

*Figure A-2*

**PFC4** PEM® PANEL FASTENER – BULLETIN PF

Size	Punch	Anvil
440/M3	975200060	975200027
632	975200061	975201243
832/M4	975200062	975200029
1032/M5	975200063	975201244

*Figure P-3*

*Figure A-2*

**PFF** PEM® FLOATING PANEL FASTENER – BULLETIN PF

Size	Punch	Anvil
1032/M5	8006702	8006825
1224	8006703	8006701
M6	8006704	

*Figure P-6*

*Figure A-10*

**PFHV** PEM<sup>®</sup> PANEL FASTENER – BULLETIN PF

Size	Punch	Anvil
440/M3	970200006400	8004688
632/M3.5	970200007400	8004689
832/M4	975200060	8005439

*Figure P-3*

*Figure A-2*

**PFP** PEM<sup>®</sup> PANEL FASTENER – BULLETIN PF

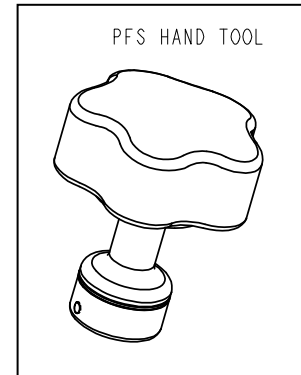
Size	Punch	Anvil
440/M3	8005440	8005413
632	8005441	8005413
832/M4	8005442	8005414
1032/M5	8005993	8005414

*Figure P-3*

*Figure A-2*

**PFS** PEM<sup>®</sup> SNAP-IN PANEL FASTENER – BULLETIN PF

Size	Hand Tool Assembly
440/M3	8006347
632/M3.5	8006347
832/M4	8006348



**PL, PLC** PEM-HEX<sup>®</sup> SELF-LOCKING NUTS – BULLETIN PL

Size	Punch	Anvil
440/M3	975200048	975200011
632/M3.5		975200012
832/M4		975200013
1032/M5		975200014

*Figure P-1*

*Figure A-4*

**PPB, PFLB, PKB** PEM<sup>®</sup> INSERTS FOR PLASTICS – BULLETIN SI  
– TOOLING TO BE DETERMINED

**PTL2** PEM<sup>®</sup> SPRING-LOADED PLUNGER ASSEMBLIES – BULLETIN PF

Size	Punch	Anvil
04	970200013300	975201245

*Figure P-3*

*Figure A-4*

**RAA, RAS** PEM<sup>®</sup> R' ANGLE CLINCH FASTENER – BULLETIN RA

Size	Punch	Anvil
440	8003076	8002711
632		8002712
832		8003642
M3		8002713
M4		8002714

*Figure P-1 -*  
*1"(25.4mm) dia*

*Figure A-8 -*  
*1"(25.4mm) dia*

**SCB/SCBJ** PEM® SPINNING CLINCH BOLT – Bulletin SCB

Size	Punch	Anvil
#4	8012730	970200006300
#6	8012731	97020007300
#8	8012732	970200008300
M3	8012730	970200229300
M3.5	8012731	970200007300
M4	8012732	970200019300
	Figure P-3	Figure A-4

**SF, SFP, SFK** PEM® SPOT FAST – BULLETIN SF

Size	Punch	Anvil
3-0.8	975200048	975200046
3-1.0		
3-1.2		
3-1.6		
5-0.8		
5-1.0		
5-1.2		
5-1.6		

*Figure P-1 -*

*Figure A-1*

**SFW** PEM® SPOT FAST – BULLETIN SFW

Size	Punch	Anvil
3-0.8	975200048	970200229300 & 975200046
3-1.0		
3-1.2		
3-1.6		
5-0.8		970200020300 & 975200046
5-1.0		
5-1.2		
5-1.6		

*Figure P-1 -*

*Figure A-4 & A-1*

**SKC-6060 (SKC 61.5)** PEM® KEYHOLE® SELF-CLINCHING STANDOFFS – BULLETIN SK

Size	Punch	Anvil
6060 / 61.5	975200048	970200012300

*Figure P-1*

*Figure A-4*

**SKC-F1.5** PEM® KEYHOLE® INVERTED SELF-CLINCHING STANDOFFS – BULLETIN SK

Size	Punch	Anvil
F1.5	975200048	8012608

*Figure P-1*

*Figure A-4*

**SL** PEM® SELF-CLINCHING LOCK NUTS – BULLETIN CL

Size	Punch	Anvil
440/M3	975200048	975200034
632/M3.5		975200035
832/M4		975200036
1032/M5		975200037
0420/M6		975200038

*Figure P-1*

*Figure A-2*

NOTE: THESE ANVILS ARE SAME AS CLS, S ANVILS.

**SMPS** PEM® SELF-CLINCHING NUT FOR ULTRA THIN SHEETS – BULLETIN CL

Size	Punch	Anvil
2/440/M2.5/M3	975200048	975200904300
632/M3.5		975200034

*Figure P-1*

*Figure A-2*

**SO, SOA, SOS, SON, BSO, BSOA, BSOS, BSON** PEM® STANDOFFS – BULLETIN SO

**SOAG, SOSG** PEM® STANDOFFS – BULLETIN K

Size	Punch	Anvil
2/3/440/M2/M2.5/M3	975200048	970200487300
632/6440/3.5M3/M3.5		970200012300
832/8632/M4		970200013300
1032/M5		970200013300
0420/M6		970200393300

*Figure P-1*

*Figure A-4*

**SP** PEM<sup>®</sup> 300 STAINLESS STEEL SELF-CLINCHING NUTS – BULLETIN CL

Size	Punch (Grooved Version)	Anvil (Grooved Version)	Punch (Stamped Version)	Anvil (Stamped Version)
440	8002691	8002687	975200048	8012821
632	8002692	8002688		8012822
832	8002693	8002689		8012823
1032	8002694	8002690		8012824
0420	975200048	975200038		8012825
M2.5	8006361	8002687		8012821
M2/M3	8002695	8002687		8012821
M3.5	8002696	8002688		8012822
M4	8002697	8002689		8012823
M5	8002698	8002690		8012824
M6	975200048	975200038		8012825

*Pin & Figure P-1*

*Figure A-7 &  
Figure A-2*

*Figure P-1*

*Figure A-2*

NOTE: These punch & anvils have special geometry for maximum clinch performance into stainless steel and alignment, except for 0420/M6, which does not require the special geometry.



**SSA, SSS, SSC, KSSB** PEM<sup>®</sup> SNAP-TOP STANDOFFS – BULLETIN SSA

Size	Punch	Anvil
ALL	975200048	970200015300

*Figure P-1*

*Figure A-4*

**TDO** PEM<sup>®</sup> CABLE TIE HOOKS-CLINCHING – BULLETIN TD

Size	Punch	Anvil
40	975200048	8006865
50		8006864
120	8003076 (1" dia)	8006863

*Figure P-1*

*Figure A-11*

**TPS, TP4** PEM<sup>®</sup> FLUSH-MOUNTED PILOT PINS – BULLETIN FH

Size	Punch 4”/101.6mm Long	Anvil For material .060”+/1.7mm+	Anvil For material .040-.060”/ 1mm – 1.7mm
.125 (.130)	975200048	8003278	8003284
.187 (.192)		8003279	8003285
.250 (.255)		8003280	8003286
3 mm (.122)		8008095	8008096
4 mm (.161)		8003281	8003287
5 mm (.201)		8003282	8003288
6 mm (.290)		8003283	8003289

*Figure P-1*

*Figure A-4*

*Figure A-9*

**TPXS** PEM<sup>®</sup> FLUSH-MOUNTED PILOT PINS – BULLETIN FH

Size	Punch 4”/101.6mm Long	Anvil For material .060”+/1.7mm+	Anvil For material .040-.060”/ 1mm – 1.7mm
3 mm (.122)	975200048	8008095	8008096

*Figure P-1*

*Figure A-4*

*Figure A-9*

**TSO, TSOS, TSOA** PEM<sup>®</sup> THREADED STANDOFFS FOR THIN SHEETS- BULLETIN SO

Size	Punch	Anvil For material .032”+/0.81mm+	Anvil For material .025- .032” / .63mm - .81/.75mm
256	975200048	970200008300	8003291
440		970200008300	8003291
6256		970200012300	8003292
632		970200012300	8003292
6440		970200012300	8003292
M2.5		970200008300	8003291
M3		970200008300	8003291
6M25		970200012300	8003292
6M3		970200012300	8003292
M35		970200012300	8003292

*Figure P-1*

*Figure A-4*

*Figure A-9*

**TY-D** PEM<sup>®</sup> CABLE TIE-MOUNT SELF-CLINCHING – BULLETIN TD

Size	Punch	Anvil
40	8003076	8006136
60		8006137
175		8006138

*Figure P-1 (1” dia)*

*Figure A-8 (1” dia)*

**U, UL PEM<sup>®</sup> MINIATURE SELF-CLINCHING FASTENERS – BULLETIN FE**

<b>Size</b>	<b>Punch</b>	<b>Anvil</b>
256/M2	975200048	975200020

*Figure P-1*
*Figure A-4*
**TURRET ANVILS**

STUDS – FH 4 – ¼-20 STANDOFFS – SO 4 AND 6	980020018
STUDS – FH M2.5 – M6	980020047
STANDOFFS – SO 4/M3/6/M3.5/8/M4/10/M5	980020053
NUTS – S AND CLS 2 – ¼-20 / M2 – M6	980020019
<b>*SPECIAL TURRET ANVILS AVAILABLE UPON REQUEST</b>	

**QX4<sup>™</sup> TURRET TOOL SYSTEM**  
(SERIES 4<sup>®</sup> and SERIESLT/4<sup>™</sup> ONLY)



**KIT 8011600**

The PEMSERTER<sup>®</sup> QX4<sup>™</sup> Turret Tool System provides an efficient method to quickly change between four different anvil tools. The one-handed operation of this tool allows an operator to install four different types and/or sizes of fasteners with one set-up. The QX4<sup>™</sup> Turret Tool System can be easily installed on all new and existing PEMSERTER<sup>®</sup> Series 4<sup>®</sup> and Series LT/4<sup>™</sup> presses.

KIT INCLUDES: Anvil Holder, QX4 Table, Color Coded Parts Tray Assembly and 3" Flat Punch 975200046.

**TOOLS FOR SERIES 4 & LT/4 BOTTOM MOUNT REVERSE FLANGE ANVIL HOLDER**

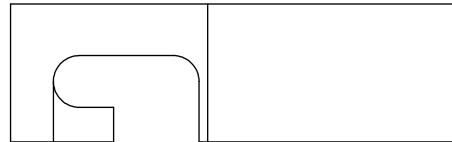
**INCLUDED IN KIT:**

PUNCH	975201037825 - 8.25" LONG
ANVIL FLAT	975200725019 - .190" LONG

**ADDITIONAL ANVILS:**

ANVIL S-440	975200841019 - .190" LONG
ANVIL S-632	975200842019 - .190" LONG
ANVIL S-832	975200843019 - .190" LONG
ANVIL S-1032	975200844019 - .190" LONG
ANVIL S-12-24	975200845019 - .190" LONG

**KIT 980020025**



KIT 980020025 INCLUDES LONG PUNCH AND FLAT ANVIL

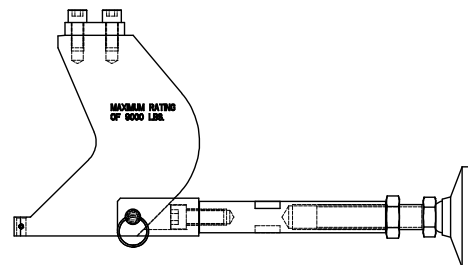
**TOOLS FOR SERIES 4 TOP MOUNT REVERSE FLANGE ANVIL HOLDER**  
(SERIES 4 PRESS ONLY)

**INCLUDED IN KIT:**

PUNCH FLAT	975200046 - 3" LONG
ANVIL FLAT	975200722025 - .25" LONG

**NOTE: OTHER ANVILS ARE AVAILABLE FOR TOP AND BOTTOM MOUNT REVERSE FLANGE ANVIL HOLDERS.**

**KIT 980020068**



KIT 980020068 INCLUDES PUNCH AND FLAT ANVIL

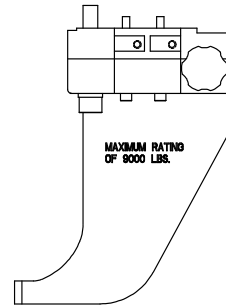
**TOOLS FOR SERIES 2000 TOP MOUNT REVERSE FLANGE ANVIL HOLDER  
(SERIES 2000 PRESS ONLY)**

**INCLUDED IN EACH KIT:**

PUNCH FLAT	8004414 – 1.5” LONG
ANVIL FLAT	975200722025 - .25” LONG

Presses earlier than 2007/17 must be modified to accept the Top Mount Reverse Flange Anvil Holder. The frame must be drilled & tapped. Contact Service Department for information at 800-523-5321 or 215-766-8853.

**KIT 8006100 (SERIES 2007/17 & UP)  
KIT 8004300 (SERIES 2006/16 & LOWER)**



EACH KIT INCLUDE PUNCH AND FLAT ANVIL  
8004300 Kit includes new ram sensor that replaces existing sensor.

**WORKPIECE ALIGNMENT PLATES KIT PART # 8004682 CONTAINS:**

ALIGNMENT PLATE ROUND	980020059
ALIGNMENT PLATE RECTANGULAR	980020060

**Reference Page 5 for the items listed below for diagrams:**

**TOOLING ADAPTER FOR .500” DIA ANVIL HOLDER & PUNCH ADAPTER –**  
PART# 8007647 (Must be purchased in Qty 2)

**ANVIL ADAPTER FOR .500” DIA SHANKS – PART# 8010778**  
**ANVIL ADAPTER FOR .625” DIA SHANKS – PART# 8010779**  
**ANVIL ADAPTER FOR .750” DIA SHANKS – PART# 8010780**

**.500” DIA FLAT PUNCHES AVAILABLE:**

- PART# 8010781 - .500” DIA X 5.25” LONG
- PART# 8010782 - .500” DIA X 4.5” LONG
- PART# 8010783 - .500” DIA X 3.75” LONG

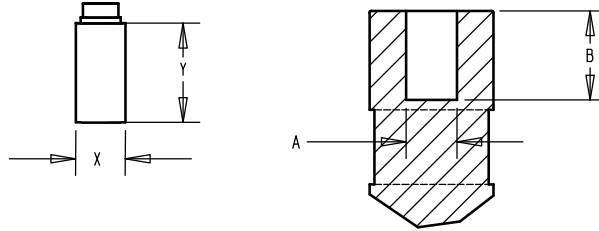
**To Determine which of the above flat punches to use with each Anvil Adapter for use with the Series 4 & Series LT/4 presses: (Total length of tooling = 7”)**

*Anvil Adapter is .75” tall, allowing for anvil to sit in .50” leaving .25” to be accounted for tooling height.*

Anvil Adapter Height	Anvil Length	1/2” Dia Flat Punch
.25”	1.5”	8010781 (5.25” Long)
.25”	2.25”	8010782 (4.50” Long)
.25”	3”	8010783 (3.75” Long)

**TOOLING FOR SWAGE STANDOFFS**

To determine the counterbore dimensions for the manual anvil, follow this formula:



A dimension = X (dia of fastener body) + .005 tolerance of “+.005 -.000”

B dimension = Y (length of fastener body) - .010

The list below references all of the manual anvils that have been designed for swage standoffs:

Anvil Part No.	Counterbore	
	Dia	Depth
8006936	.192	.150
8008455	.192	.235
8008454	.192	.675
8006946	.242	.150
8006937	.242	.580
8006195	.245	.485
8008459	.255	.080
8006935	.255	.450
8006190	.255	1.20
8006926	.260	.900
8009970	.380	.490
8009971	.380	.740

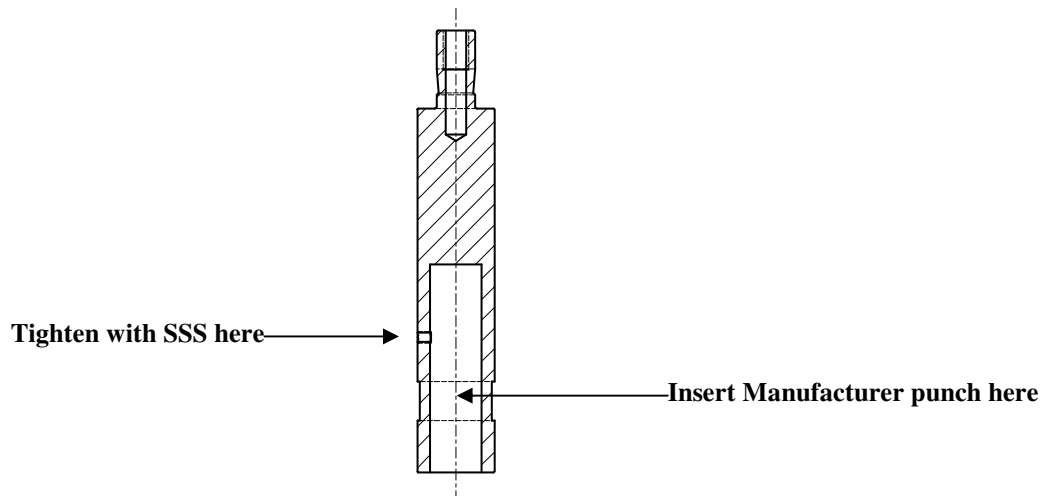
**Punch Adapter**

This adapter is for holding the manufacturer punches so that they can properly install the swage standoffs.

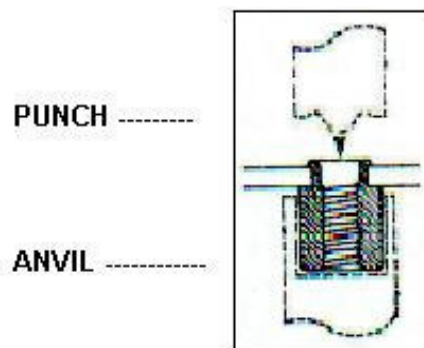
Adapter Part No.	Adapter Hole Dia	Adapter Hole Depth*
8007619	.501	2.00"
8009613	.501	1.50"
8009614	.501	1.20"

\*The depth of the adapter hole will vary depending on the length of the Manufacturer tooling being adapted to our tooling. The length of the tooling must measure up to the standard 7".

The punches are inserted into the PEMSERTER<sup>®</sup> punch adapter and are held in with Qty 1 - SSS #4-40 x 1/4 LG.



The manufacturer punches contain the rounded geometry for installing the swage standoffs (see below):



**For Series 2000, Series 4 & Series LT4 presses:**



**Important:** The ram must contact the fastener fully in the workpiece (but not installed) and both the fastener and workpiece must be flat to the punch and anvil. The gap between the punch and the anvil must not exceed 5.5mm (7/32”) to conform to internationally recognized safety standards. This means that the stacked height of the fastener and the workpiece before installation must not exceed 5.5mm (7/32”). These include standards published by ISO, ANSI, OSHA, CEN and CSA.

**PRESS ACCESSORIES:**

<b>Part Number</b>	<b>Description</b>	<b>Features and Benefits</b>
8005538 (120V) (US)  8005539 (220V) (EUROPE)	Industrial Work Light	<ul style="list-style-type: none"> <li>• Flexible, Efficient Coverage of Working Area</li> <li>• Bright 20W Halogen Bulb</li> <li>• Magnetic Base Mounts to Frame</li> <li>• 120V/220V models available</li> </ul>
8005537	Anti-Fatigue Work Mat	<ul style="list-style-type: none"> <li>• Solid polyurethane nodule design increases blood circulation and reduces cumulative trauma disorders associated with prolonged standing.</li> <li>• Chemical Resistant</li> <li>• Durable and easy to clean</li> <li>• Shock absorbent with Tapered Edges</li> <li>• 24" by 36"</li> <li>• Two Year Wear Warranty</li> </ul>
8005531	Industrial Work Seat	<ul style="list-style-type: none"> <li>• Ergonomic design improves comfort and increases worker productivity</li> <li>• Four Easy to use Height (16" to 32") and Tilt Adjustments</li> <li>• Durable Polyurethane Seat</li> <li>• Foot Rest Step Rail</li> <li>• Built tough for industrial environment</li> <li>• Swivel Stop Feature makes getting on and off the chair easy and safe</li> <li>• Five Year, Three shift Warranty</li> </ul>