

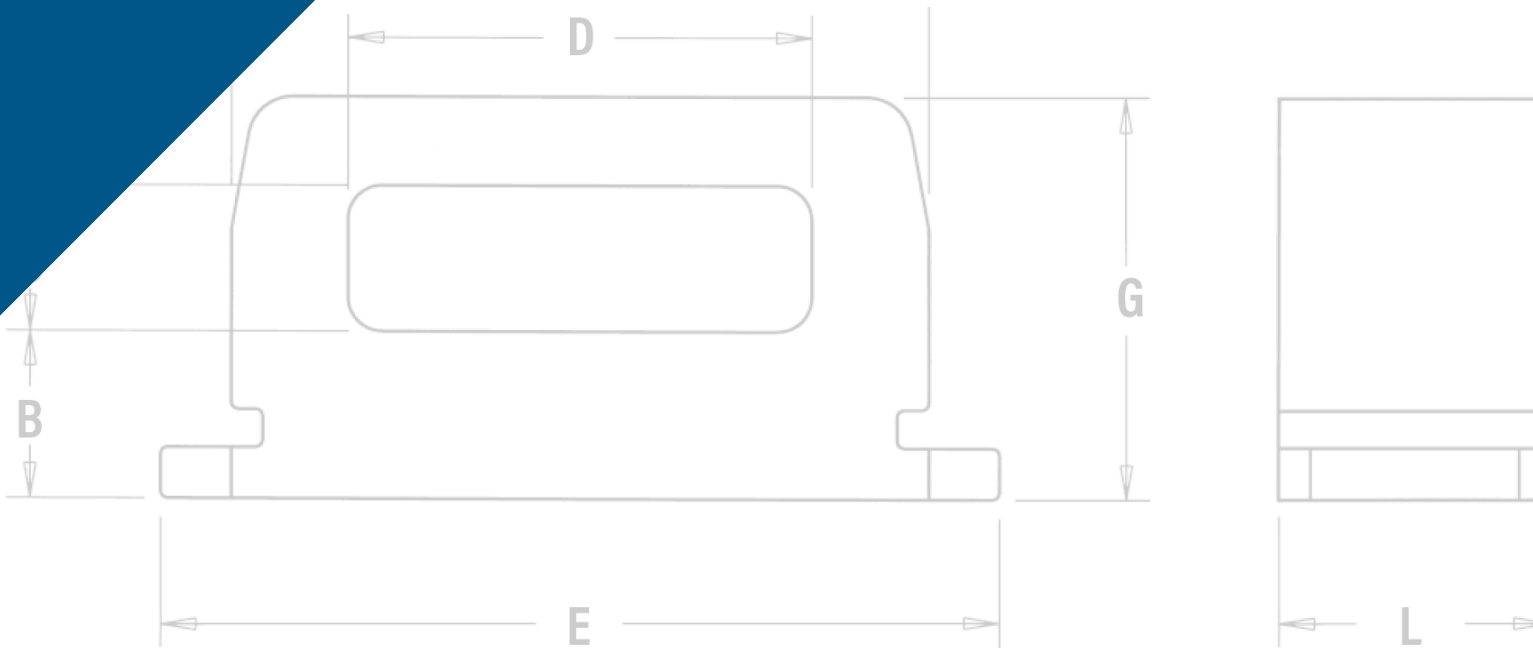


PEM® TY-D® hardware provides secure metal attachment points for mounting wires to electronic chassis.



TD™

**SELF-CLINCHING TY-D®
CABLE TIE-MOUNTS
AND HOOKS**



SELF-CLINCHING TY-D® CABLE TIE-MOUNTS AND HOOKS

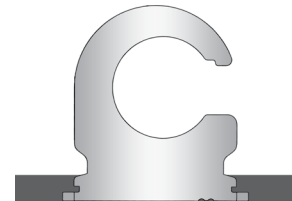
PEM® TY-D® self-clinching tie-mounts and hooks provide secure metal attachment points for mounting wires to electronic chassis or enclosures. TY-D® hardware can be a great improvement over traditional mounting methods. They can be placed with assurance at designed locations and angles to remain secure for the life of the assembly.

- Installs quickly and permanently without screws
- Eliminates the use of adhesives that typically fail over time and temperature cycling
- Will not protrude on the reverse side, panel remains flush
- Fasteners ensure wire placement in desired location

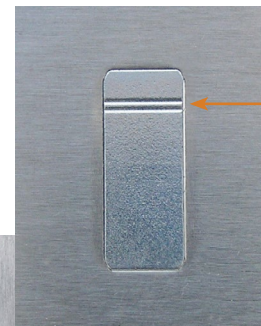
TD™/TDS™ cable tie-mounts allow users to easily slide ties through the hardware's "eye" for fast cable mounting.



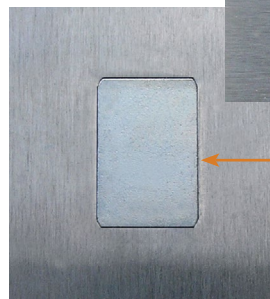
TDO™ cable tie hooks enable users to attach, remove, and return tie-bundled wires to their mounting points when components need to be accessed for service or when wires must be replaced. The hook feature allows ties to remain intact and wires to remain wrapped.



Reverse side of TDO hooks installed in sheet.

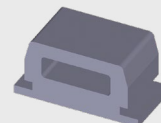


TDO hooks open end orientation mark.



Depending on placement of the fastener within the mounting hole, a slight gap may be noticeable along the non-clinching edges of the fastener after installation. If gap is not acceptable in your application, check with [techsupport](mailto:techsupport@pemnet.com) for a solution.

Reverse side of TD /TDS mounts installed in sheet.

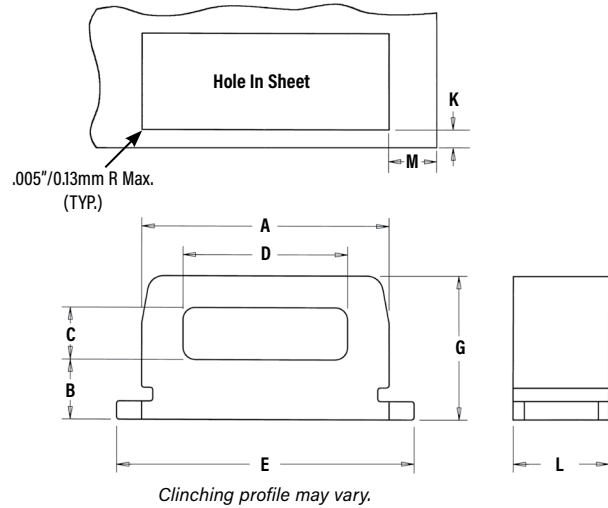


Fastener drawings and models are available at www.pemnet.com

TD™/TDS™ CABLE TIE-MOUNTS

PART NUMBER DESIGNATION

TD	-	60	-	6	ZI
TD	S	60	-	6	
TD	S	60	-	6	ZI
↓		↓		↓	↓
Type	Material Code	Profile	Length Code	Finish Code	



Profile Shown Actual Size.



All dimensions are in inches.

UNIFIED	Type		Profile ⁽¹⁾	Length Code	Length L ±.003	Sheet Thickness	Hole Size In Sheet +.002 -.001	A ±.003	B ±.006	C ±.006	D ±.006	E ±.006	Height G ±.006	Min. Hole Edge To Sheet Edge K	Min. Hole Edge To Sheet Edge M
	Steel	Stainless Steel													
TD	TDS	40	4	.121	.040 - .050	.250 x .125	.246	.055	.065	.160	.308	.150	.040	.147	
TD	TDS	60	6	.184	.040 - .070	.312 x .187	.308	.075	.065	.205	.370	.180	.040	.196	
TD	TDS	175	12	.371	.040 - .125	.500 x .375	.496	.130	.095	.360	.562	.285	.040	.262	

All dimensions are in millimeters.

METRIC	Type		Profile ⁽¹⁾	Length Code	Length L ±0.08	Sheet Thickness	Hole Size In Sheet +0.05 -0.03	A ±0.08	B ±0.15	C ±0.15	D ±0.15	E ±0.15	Height G ±0.15	Min. Hole Edge To Sheet Edge K	Min. Hole Edge To Sheet Edge M
	Steel	Stainless Steel													
TD	TDS	40	4	3.07	1.02 - 1.27	6.35 x 3.18	6.25	1.4	1.65	4.06	7.82	3.81	1.02	3.73	
TD	TDS	60	6	4.67	1.02 - 1.78	7.93 x 4.75	7.82	1.91	1.65	5.21	9.4	4.57	1.02	4.98	
TD	TDS	175	12	9.42	1.02 - 3.18	12.7 x 9.53	12.6	3.3	2.4	9.14	14.28	7.24	1.02	6.65	

(1) Reference to typical load rating (in pounds) for appropriate size nylon cable tie.

SELF-CLINCHING TY-D® CABLE TIE-MOUNTS AND HOOKS

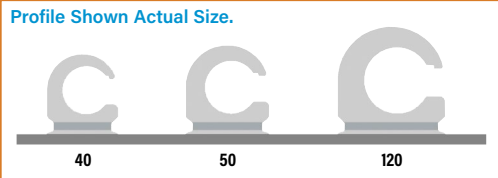
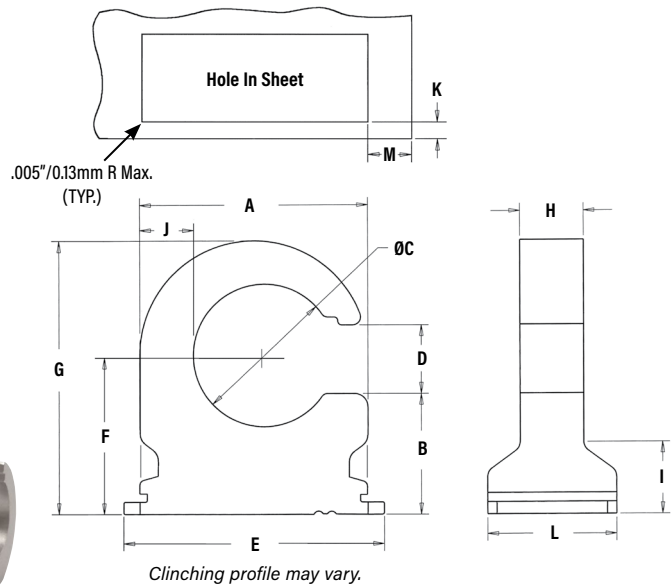
TDO™ CABLE TIE HOOKS

PART NUMBER DESIGNATION

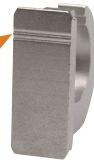
TDO - **50** - **8** **ZI**

↓ ↓ ↓ ↓

Type Profile Length Code Finish Code



TDO™ hooks open end orientation mark.



All dimensions are in inches.

UNIFIED	Type	Profile (1)	Length Code	Length L ±.003	Sheet Thickness	Hole Size In Sheet +.002 -.001	A ±.003	B ±.006	ØC ±.006	D ±.006	E ±.006	F ±.005	Height G Nom.	H ±.010	I ±.010	J Nom.	Min. Hole Edge To Sheet Edge K	Min. Hole Edge To Sheet Edge M
	TDO	40	8	.246	.040 - .155	.250 x .375	.371	.213	.245	.130	.433	.285	.471	.12	.13	.083	.040	.147
	TDO	50	8	.246	.040 - .155	.250 x .438	.434	.228	.270	.130	.496	.300	.517	.12	.13	.102	.040	.196
	TDO	120	8	.246	.040 - .155	.250 x .562	.558	.255	.340	.140	.620	.335	.614	.12	.13	.139	.040	.262

All dimensions are in millimeters.

METRIC	Type	Profile (1)	Length Code	Length L ±0.08	Sheet Thickness	Hole Size In Sheet +0.05 -0.03	A ±0.08	B ±0.15	ØC ±0.15	D ±0.15	E ±0.15	F ±0.13	Height G Nom.	H ± 0.25	I ± 0.25	J Nom.	Min. Hole Edge To Sheet Edge K	Min. Hole Edge To Sheet Edge M
	TDO	40	8	6.25	1.02 - 3.94	6.35 x 9.53	9.42	5.41	6.22	3.3	11	7.24	11.96	3.05	3.3	2.11	1.02	3.73
	TDO	50	8	6.25	1.02 - 3.94	6.35 x 11.13	11.02	5.79	6.86	3.3	12.6	7.62	13.13	3.05	3.3	2.59	1.02	4.98
	TDO	120	8	6.25	1.02 - 3.94	6.35 x 14.27	14.17	6.48	8.64	3.56	15.75	8.51	15.6	3.05	3.3	3.53	1.02	6.65

MATERIAL AND FINISH SPECIFICATIONS

Type	Fastener Materials		Standard Finishes ⁽²⁾		Optional Finish ⁽²⁾⁽³⁾	For Use in Sheet Hardness: ⁽⁴⁾	
	Sintered Steel	17-4 Stainless Steel	Zinc Plated 5µm, Colorless	Passivated and/or Tested Per ASTM A380	Zinc Plated 8µm, Colorless Over Nickel Strike	HRB 60 / HB 107 or less	HRB 70 / HB 125 or less
TD	■		■			■	
TDS		■		■	■		■
TDO	■		■			■	
Part Number Code For Finishes			ZI	None	ZI		

- (1) Reference to typical load rating (in pounds) for appropriate size nylon cable tie.
- (2) See PEM [Technical Support](#) section of our web site for related plating standards and specifications.
- (3) When applied to stainless steel base metal a nickel strike is used under the zinc for improved adhesion
- (4) HRB - Hardness Rockwell "B" Scale. HB - Hardness Brinell.



INSTALLATION

1. Punch a properly sized rectangular mounting hole in the sheet. Do not perform any secondary operations such as deburring.
2. Place the fastener through the mounting hole (preferably the punch side) and into the anvil.
3. With the installation punch and anvil surfaces parallel, apply a squeezing force until the bottom of the fastener becomes flush with the sheet.

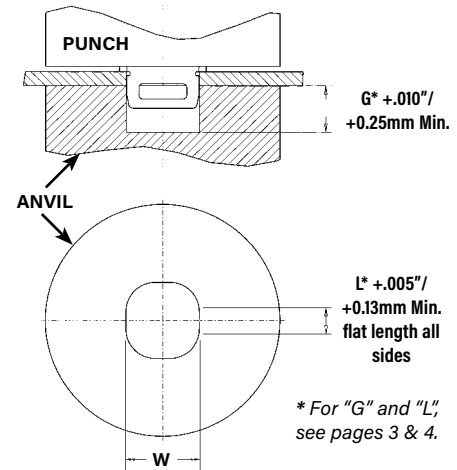
PEMSERTER® Installation Tooling

All dimensions are in inches.

UNIFIED	Part Number	W ±.001	Anvil Part Number	Punch Part Number
	TD-40-4 / TDS-40-4	.251	8006136	8003076
	TD-60-6 / TDS-60-6	.313	8006137	
	TD-175-12 / TDS-175-12	.501	8006138	
	TDO-40-8	.379	8006865	
	TDO-50-8	.442	8006864	
TDO-120-8	.566	8006863		

All dimensions are in millimeters.

METRIC	Part Number	W ±0.03	Anvil Part Number	Punch Part Number
	TD-40-4 / TDS-40-4	6.36	8006136	8003076
	TD-60-6 / TDS-60-6	7.95	8006137	
	TD-175-12 / TDS-175-12	12.73	8006138	
	TDO-40-8	9.63	8006865	
	TDO-50-8	11.23	8006864	
TDO-120-8	14.38	8006863		



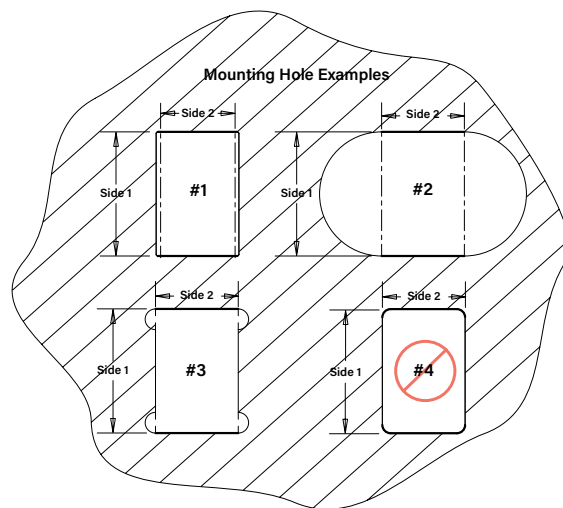
NOTE: The punch must be large enough to cover the entire base of the fastener to ensure proper installation.

INSTALLATION NOTES

- For best results we recommend using a HAEGER® or PEMSERTER® machine for installation of PEM® self-clinching fasteners. Please e-mail installationmachineinfo@pemnet.com for more information.
- Visit the Animation Library on our website to view the installation process [for this product](#).

MOUNTING HOLE EXAMPLES

The mounting hole is defined by two dimensions. The two thick lines shown must be straight for the entire length defined by "Side 2" and must be separated by the distance shown as "Side 1" (Side 1 and Side 2 are the two dimensions given for the mounting hole on pages 3 and 4). The illustration shows three examples (#1, #2, and #3) of how it can be achieved. Example #4 in the lower right side will not work.



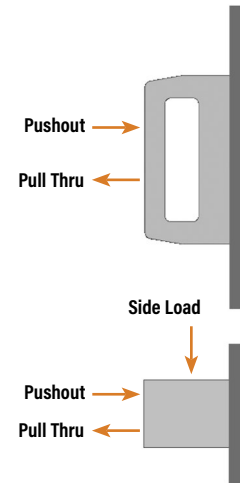
SELF-CLINCHING TY-D® CABLE TIE-MOUNTS AND HOOKS

PERFORMANCE DATA⁽¹⁾

TD™/TDS™ CABLE TIE-MOUNTS

UNIFIED	Part Number	Test Sheet Material							
		Cold-rolled Steel				5052-H34 Aluminum			
		Installation (lbs.)	Pushout (lbs.)	Pull Thru (lbs.)	Side Load (lbs.)	Installation (lbs.)	Pushout (lbs.)	Pull Thru (lbs.)	Side Load (lbs.)
	TD-40-4 / TDS-40-4	1800	175	100	90	1000	90	100	90
	TD-60-6 / TDS-60-6	2500	260	160	100	1500	140	160	100
	TD-175-12 / TDS-175-12	4000	350	175	140	3000	235	175	140

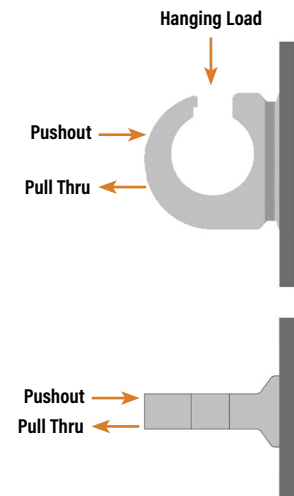
METRIC	Part Number	Test Sheet Material							
		Cold-rolled Steel				5052-H34 Aluminum			
		Installation (kN)	Pushout (N)	Pull Thru (N)	Side Load (N)	Installation (kN)	Pushout (N)	Pull Thru (N)	Side Load (N)
	TD-40-4 / TDS-40-4	8	780	445	400	4.5	400	445	400
	TD-60-6 / TDS-60-6	11	1160	712	445	6.7	620	712	445
	TD-175-12 / TDS-175-12	17.7	1560	780	620	13.3	1040	780	620



TDO™ CABLE TIE HOOKS

UNIFIED	Part Number	Cable Tie Screw Size	Test Sheet Material							
			Cold-rolled Steel				5052-H34 Aluminum			
			Installation (lbs.)	Pushout (lbs.)	Pull Thru (lbs.)	Hanging Load (lbs.)	Installation (lbs.)	Pushout (lbs.)	Pull Thru (lbs.)	Hanging Load (lbs.)
	TDO-40-8	#8	3000	105	70	145	2000	105	70	130
	TDO-50-8	#10	3000	150	90	145	2000	130	90	130
	TDO-120-8	1/4	3000	200	110	145	2000	145	110	130

METRIC	Part Number	Cable Tie Screw Size	Test Sheet Material							
			Cold-rolled Steel				5052-H34 Aluminum			
			Installation (kN)	Pushout (N)	Pull Thru (N)	Hanging Load (N)	Installation (kN)	Pushout (N)	Pull Thru (N)	Hanging Load (N)
	TDO-40-8	M4	13.4	465	310	645	8.9	465	310	575
	TDO-50-8	M5	13.4	665	400	645	8.9	575	400	575
	TDO-120-8	M6	13.4	890	490	645	8.9	645	490	575



(1) Published installation forces are for general reference. Actual set-up and confirmation of complete installation should be made by observing proper seating of fastener as described in the installation steps. Other performance values reported are averages when all proper installation parameters and procedures are followed. Variations in mounting hole size, sheet material, and installation procedure may affect performance. Performance testing this product in your application is recommended. We will be happy to provide technical assistance and/or samples for this purpose.

All PEM® products meet our stringent quality standards. If you require additional industry or other specific [quality certifications](#), special procedures and/or part numbers are required. Please contact your local sales office or representative for further information.

Regulatory [compliance information](#) is available in Technical Support section of our website. Specifications subject to change without notice. See our website for the most current version of this bulletin.

PennEngineering®



North America: Danboro, Pennsylvania USA • E-mail: info@pemnet.com • Tel: +1-215-766-8853 • 800-237-4736 (USA)

Europe: Galway, Ireland • E-mail: europa@pemnet.com • Tel: +353-91-751714

Asia/Pacific: Singapore • E-mail: singapore@pemnet.com • Tel: +65-6-745-0660

Shanghai, China • E-mail: china@pemnet.com • Tel: +86-21-5868-3688

Visit our PEMNET™ Resource Center at www.pemnet.com • Technical support e-mail: techsupport@pemnet.com