

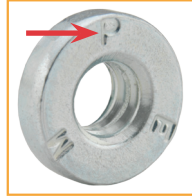
PennEngineering® Fastener Registered Trademarks



PEM® Dimple

CFHA, CFHC, CHA, CHC, FH, FH4, FHA, FHL, FHLS, FHP, FHS, FHX, HF109, HFG8, HFE, HFH, HFHB, HFHS, HFLH, HSCB, KFH, KSSB, MPP, PF10, PF30, PF31, PF32, PF50, PF51, PF52, PF60, PF61, PF62, PF11, PF11M, PF11MF, PF11MW, PF11PM, PF12, PF12M, PF12MF, PF12MW, PF7M, PF7MF, PFC2, PFC2P, PFC4, PFHV, PFK, PFS2, PSHP, SCB, SCBJ, SCBR, SF, SFK, SFP, SFW, SGPC, SKC, SKC-F, SMTPFSLM, SSA, SSC, SSS, T, T4, TFH, TFHS, THFE, TK4, TKA, TP4, TPS, TPXS, and TS fasteners

PEM® Stamp
CLS, CLSS, H, HN, HNL, PSHP,
S, SFN, SL, SMPP, SMPS, SS,
and WN fasteners



PEM® Skirted Shoulder
PF11, PF11M, PF11MF,
PF11MW, PF11PM, PF12,
PF12M, PF12MF,
PF12MW, PF7M, and PF7MF
fasteners



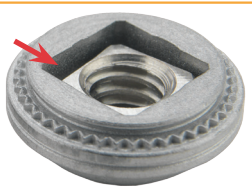
PEM® "Single Groove" mark
A4, BSO4, LA4, MSO4, PFC4,
SO4, SP (Select sizes), and
TSO4 fasteners



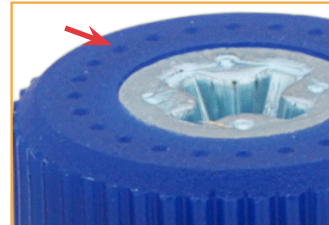
PEM® "Two Groove" mark
B, BS, BSO, BSON, BSOS, CSOS,
CSS, DSO, DSOS, HSR, KF2, KFB3,
KFE, KFS2, KFSE, PF7M, PF7MF,
SMTSO, SMTSOB, SMTPFSLM,
SO, SOA, SOAG, SON, SOS, SOSG,
TSO, TSOA, and TSOS fasteners



PEM® "Double Squares" mark
A4, AC, AS, LA4, LAC, and LAS
fasteners



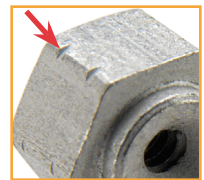
**PEM® C.A.P.S.®
Dot Pattern**
PF11PM fastener



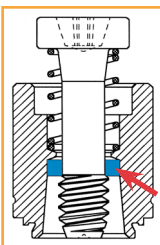
**PEM® Circle on
Pedestal**
RAS fastener



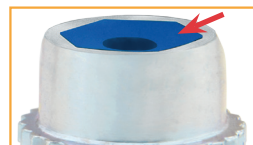
PEM® Double Notch
microPEM® SMTSO fastener



PEM® Blue Nylon Ring
PFC4, PFC2P, PFC2, PFS2,
and PFK fasteners



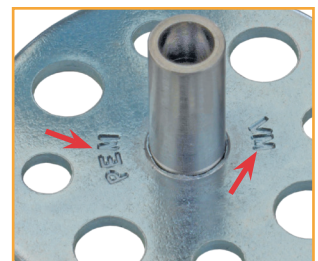
**PEM® Blue Nylon
Locking Element**
PL, PLC and CFN fasteners



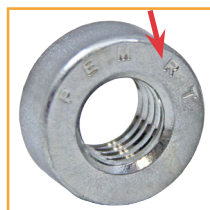
ATLAS® AE Stamp
MaxTite® and Plus+Tite®
products



PEM VM® Stamp
(Both Sides)
VariMount™ Base Plates



PEM® SH Stamp
SH fasteners



PEM® RT Stamp
S-RT fasteners



PEM® SP Stamp
SP fasteners