

PennEngineering®

# PEM<sup>®</sup>LINE

*Fastening Products, Systems, and Applications from the Industry Pioneer*

## PEM<sup>®</sup> FLOATING ACCESS HARDWARE

**NEW!**



**Type PF11MW™** (*knurled cap*)  
and  
**Type PF12MW™** (*smooth cap*)

*Captive-screw assemblies  
compensate for mating thread  
misalignment up to .060"/1.52mm*

*Anti cross-threading screw technology  
speeds assembly*

**SEE PAGE 3**



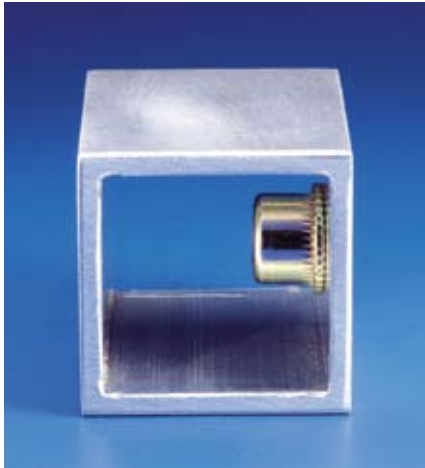
*Type PF11MW*

**[www.pemnet.com](http://www.pemnet.com)**

# ATLAS® SOLUTIONS



ATLAS® blind threaded inserts and studs provide strong permanent threads in panels of any hardness as thin as .020"/0.51mm.



- *Fast, easy one-sided installation.*
- *Install anytime during production, in painted panels, in the field, or during repair operations.*
- *Ideal for close-to-edge applications.*
- *Light, compact, and cost-effective installation tooling.*
- *Capability to assemble multiple dissimilar materials during installation.*

*Complete 36-Page Catalog is available upon request or download*



## TOOLING UPDATE

*Our new AE 45 Spin-Pull tool (shown at left) delivers powerful spin/pull action to install MaxTite and straight shank Plus+Tite fasteners.*

*The single trigger draws inserts down and then "auto-reverses" to allow for the next installation.*

*Set-up is easy: A dial under the tool allows operators to hand-adjust the proper stroke without any need for tools.*

# NEW PEM® FASTENERS



**Type PF11MW hardware shown with supplied mating washer and optional scratch-proof DuraBlack™ finish**

## **PEM® floating access hardware compensates for mating thread misalignment**

These captive screw assemblies (Types PF11MW™ and PF12MW™) install permanently in any panel hardness and compensate for up to .060"/1.52mm mating thread misalignment.

Licensed MATHread® anti cross-threading screw technology speeds assembly and eliminates failures by correcting off-angle installations. (MATHread® is a registered trademark of MATHread, Inc.)

Type PF11MW meets "operator access area" requirements similar to UL 508.

Type PF12MW meets "service access area" requirements similar to UL 1950.

Universal slot/Phillips recess is standard.

Fasteners suit close centerline-to-edge applications and can be installed on painted surfaces without marring.

Thread sizes for these RoHS-compliant fasteners range from #4-40 through 1/4-20 and M3 through M6. (Part drawings available from our online PEM CAD library.)



**Download "Bulletin PF11MW" from our Product Literature" link:**  
[http://www.pemnet.com/comp\\_lit\\_files](http://www.pemnet.com/comp_lit_files)

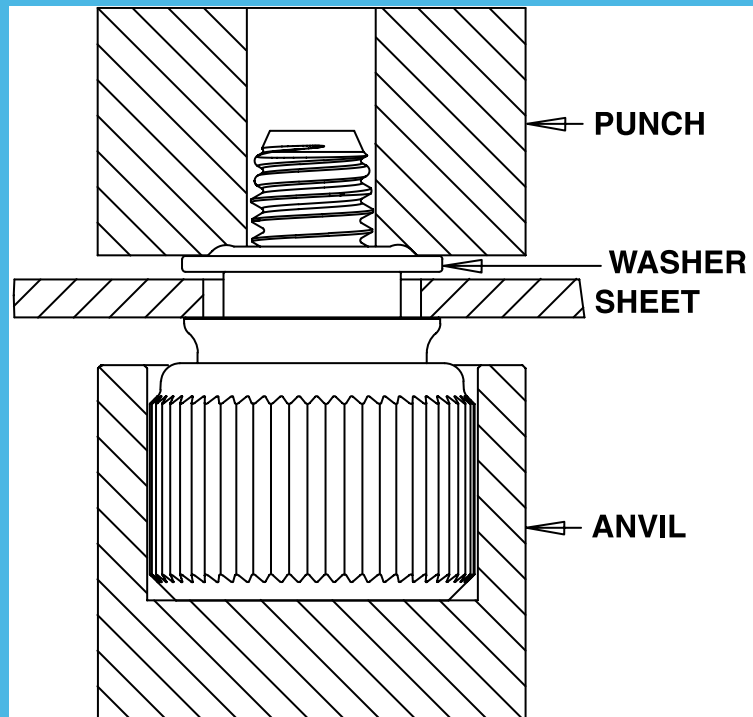
## **EASY INSTALLATION**

**1. Prepare properly sized mounting hole in sheet.**

**2. Place fastener into recessed anvil and workpiece over the shank of the fastener.**

**Then, place the supplied washer over the fastener's shank.**

**3. With punch and anvil surfaces parallel, use flaring punch to apply swaging force.**



# PEMSERTER® UPDATE



Series 2000® Press with Dual-Bowl Option

## SERIES 2000® PRESS OPTION: DUAL BOWL AND QX™ TURRET TOOL SYSTEM

Our Series 2000® automatic press can accommodate a dual-bowl option and QX™ Turret Tool system to allow quick and efficient changes between anvil tools while installing different types of self-clinching fasteners.



Using the second bowl and the turret tool system, two fastener types can be installed in automatic feed mode and two in manual feed mode for streamlined job productivity and quality.

The CE-certified press offers a 24"/61cm throat depth, performs at cycle rates up to 2,750 strokes/hour, and delivers a ram force of 400lbs. to 16,000 lbs./2.7kN to 71.2kN.

## NEW PEMSERTER® SPEC SHEETS PROFILE EQUIPMENT SOLUTIONS

A new series of five two-page spec sheets is dedicated to the complete line of our presses for installing self-clinching fasteners.

Each sheet provides an overview, features and benefits, capabilities, and specifications for the particular press model.

Sheets separately cover the PEMSERTER® 3000™ automatic press (*shown at right*) integrating full servo electromechanical actuation technology; the Series 2000® automatic press; the Series 4® pneumatic press; the Series LT/4™ pneumatic press; and the Series P3™ pneumatic press and MICRO-MATE® hand tool.

Sheets offer quick and easy reference sources.

**Download all the new spec sheets from our  
Product Literature" link:**

[http://www.pemnet.com/comp\\_lit\\_files](http://www.pemnet.com/comp_lit_files)



**PennEngineering®**



**North America:** Danboro, PA 18916 USA • E-mail: [info@pemnet.com](mailto:info@pemnet.com) • Tel: +1-215-766-8853 • Fax: +1-215-766-0143 • 800-237-4736 (USA Only)  
**U.K. And Europe:** Doncaster, England • E-mail: [uk@pemnet.com](mailto:uk@pemnet.com) Tel: +44 (0)1302 765700 • Fax: +44 (0)1302 367580  
**Asia/Pacific:** Singapore • E-mail: [singapore@pemnet.com](mailto:singapore@pemnet.com) • Tel: +65-6-745-0660 • Fax: +65-6-745-2400  
Shanghai, China • E-mail: [china@pemnet.com](mailto:china@pemnet.com) • Tel: +86-21-5868-3688 • Fax: +86-21-5868-3988

Visit our PEMNET™ Resource Center at [www.pemnet.com](http://www.pemnet.com)