

# PEMSERTER® SERIES 4® PRESS WITH AUTOMATIC FEED

The PEMSERTER® Series 4® press with automatic feed provides 6 tons of force and has a 45.7cm / 18" throat depth which provides clearance for a variety of chassis configurations. It is designed to install self-clinching nuts, studs, and standoffs in sizes M2.5 to M6 / #2-56 to 1/4".



**NEW**



## Features and Benefits

- ▶ Pneumatic power for speed, consistency, and simple operation.
- ▶ Uses same tooling components as the Series 2000® and Series 3000™ presses.
- ▶ Automatically installs nuts, studs, and standoffs from M2.5 to M6 / #2-56 to 1/4".
- ▶ Pneumatic and PLC logic control system.
- ▶ Touch-screen for operator friendly operation.
- ▶ Vibratory feeder bowl for automatic fastener feeding.
- ▶ Integral point-of-operation safety.
- ▶ Insertion force adjustable from 1.8 to 53.4 kN / 400 to 12,000 lbs.
- ▶ Laser pointer, stroke counter, and lockable cabinet for tools and accessories storage.

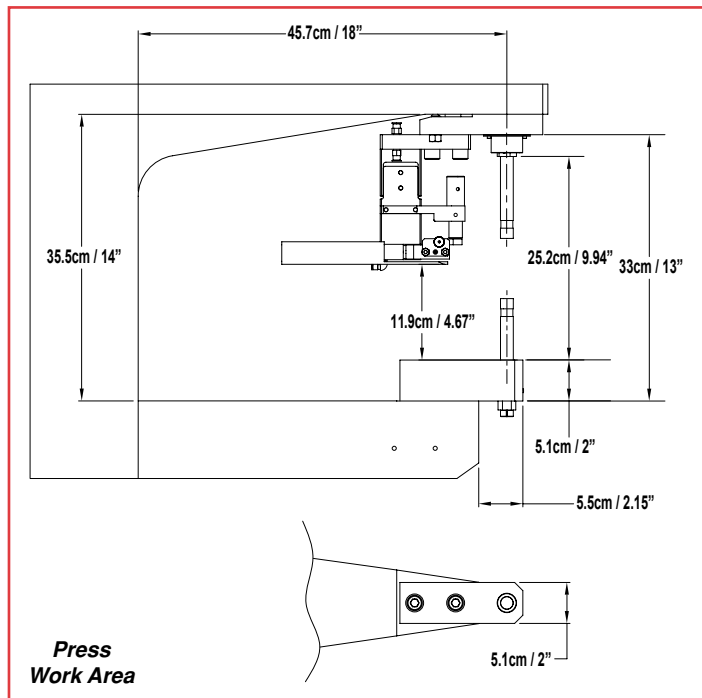


# PEMSERTER® SERIES 4® PRESS WITH AUTOMATIC FEED

## Specifications

Ram Force	1.8 to 53.4 kN / 400 to 12,000 lbs.
Control System	Pneumatic and PLC Logic
Pressure System Type	Pneumatic / Lever
Electrical Requirements	120V 60Hz 4A or 230V 50Hz 2A single phase
Air Requirements*	6 to 7 BAR / 90 to 100 PSI 12mm / 1/2" dia. minimum line flow
Throat Depth	45.7cm / 18"
Height (on cabinet)	165cm / 65"
Weight	Press - 300 kg / 661 lbs. With Cabinet - 390kg / 859lbs.
Cabinet Dimensions	66cm L x 78cm W x 76cm H 26" L x 31" W x 30" H

\*1 psi = 0.07 bar. 1 bar = 14.5 psi.



**Press  
Work Area**

### Others in the complete line of presses include:

PEMSERTER® Series 3000™, automatic insertion press  
 PEMSERTER® Series 2000®, automatic insertion press  
 PEMSERTER® Series 4®, pneumatic manual press  
 PEMSERTER® Series P3®, portable pneumatic hand press  
 PEMSERTER® MICRO-MATE® hand tool  
 PEMSERTER® In-die fastener installation system

**For your local PEMSERTER® Dealer, or more information on our installation equipment, call us at 800-523-5321 (USA only) or 215-766-8853 or visit us at [www.pemnet.com](http://www.pemnet.com)**

Specifications subject to change without notice.  
 See our website for the most current version of this bulletin.  
 RoHS compliance information can be found on our website.  
 © 2012 PennEngineering.

**PennEngineering®**



**North America:** Danboro, PA USA • E-mail: [info@pemnet.com](mailto:info@pemnet.com) • Tel: +1-215-766-8853 • Fax: +1-215-766-0143 • 800-237-4736 (USA Only)  
**Europe:** Galway, Ireland • E-mail: [europe@pemnet.com](mailto:europe@pemnet.com) • Tel: +353-91-751714 • Fax: +353-91-753541  
**Asia/Pacific:** Singapore • E-mail: [singapore@pemnet.com](mailto:singapore@pemnet.com) • Tel: +65-6-745-0660 • Fax: +65-6-745-2400  
 Shanghai, China • E-mail: [china@pemnet.com](mailto:china@pemnet.com) • Tel: +86-21-5868-3688 • Fax: +86-21-5868-3988

Visit our PEMNET™ Resource Center at [www.pemnet.com](http://www.pemnet.com)

Technical support e-mail: [techsupport@pemnet.com](mailto:techsupport@pemnet.com)

PS4AF-2