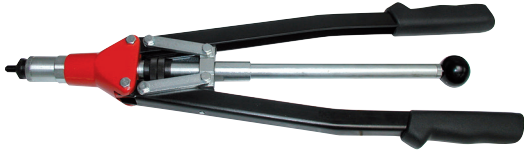


RIV903C HAND TOOL OPERATION MANUAL



OPERATING INSTRUCTIONS

The RIV903 hand tool comes complete with tie rods and heads for sizes M3, M4, M5, M6, M8 and M10 and a spanner wrench to service the tool.

CHANGING THE TIE ROD

Unscrew and remove head (1) and ring nut (2). Using the supplied spanner wrench (3), unlock the tie rod/head couple (4) and ring nut (5). Take out the tie rod from the ring nut and replace it with the correct size. All tools are equipped with a tie rod and a head for each size of insert.

STROKE ADJUSTMENT

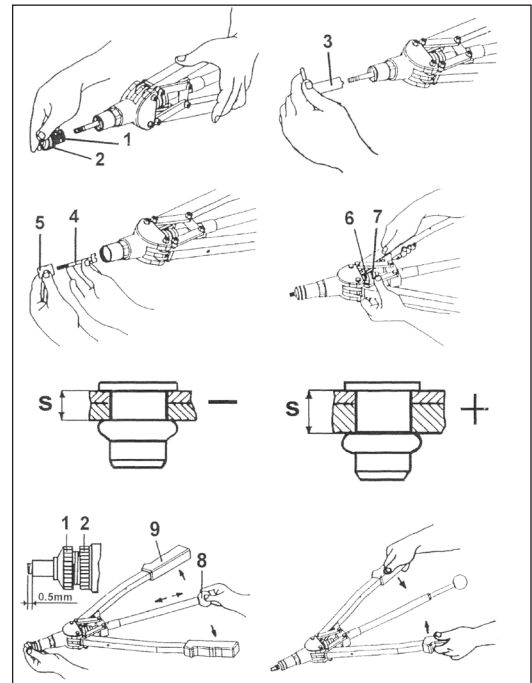
This operation must be done before placing the insert and depending on the thickness to be gripped. To adjust the stroke, first unlock ring nut (6) and then remove regulator (7). Unscrew it to increase the stroke and screw it to reduce the stroke. Increasing the stroke causes a higher deformation of the insert, reducing the stroke causes a lower deformation of the insert always as per the thickness to be gripped (S). After the first stroke adjustment, fix the insert on the surface and finish the stroke adjustment according to the grip of the insert. The ideal stroke gives a steady, but not exaggerated, insert clamping. If the stroke is too short, the insert will not be installed properly, on the contrary, if the stroke is too long, the threads of the insert could be deformed or the tie rod may break.

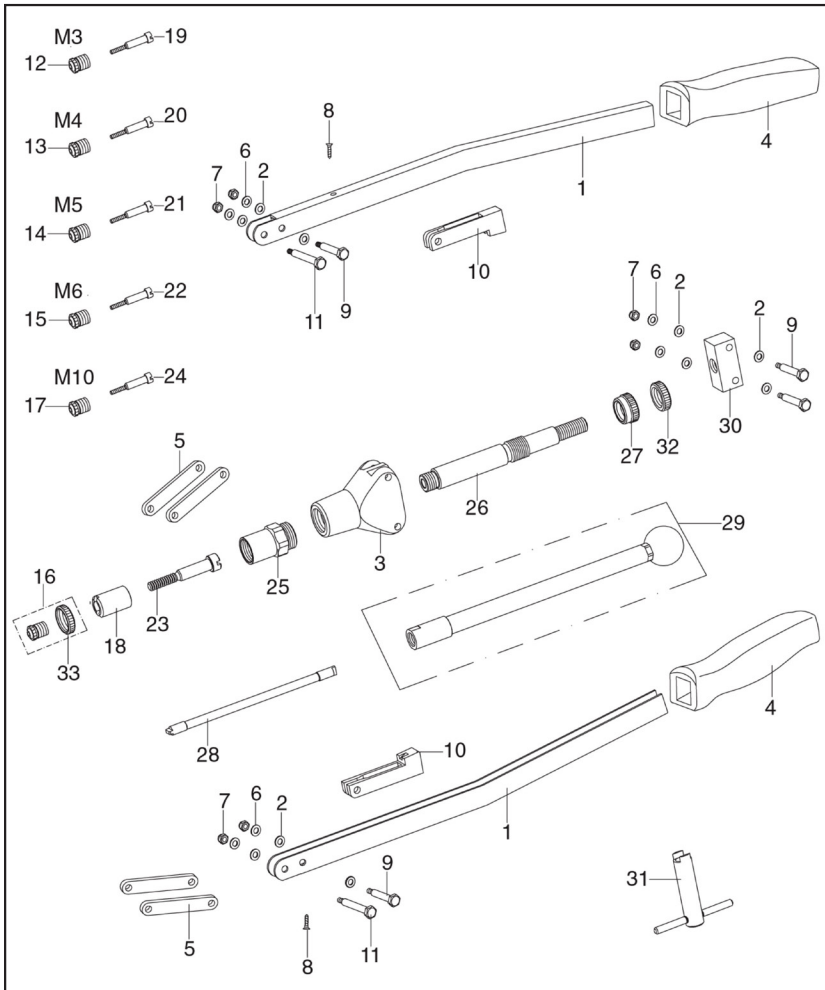
HEAD ADJUSTMENT

After setting the stroke, it is necessary to adjust the head (1). Put the threaded insert on the tie rod. It is important that the insert is fully threaded all the way onto the tie rod. The tie rod must protrude 0.5 mm from the insert. If it isn't protruding 0.5 mm from the insert, it is necessary to unlock ring nut (2) and adjust the head position. Screwing it will increase the extension of the tie rod and unscrewing it will reduce the extension of the tie rod. After the adjustment is complete, lock the ring nut again. Head adjustment operations must be done any time you change the tie rod.

INSERT FIXING

Pull knob (8) and open the levers (9). Screw the insert on the tie rod (4) carrying it towards the inside of the tool (B). Put the insert in the hole of the surface and fix it using levers (9). Pull the knob to unscrew the tie rod from the fixed insert.



SPARE PARTS


REF.	QTY.	DESCRIPTION
1	2	Handle
2	8	Brass washer Ø 6 mm
3	1	Body RAL 3020
4	2	Handle grip
5	4	Small levers
6	6	Washer Ø 5 mm WZC
7	6	Nut M5
8	2	Screw
9	4	Pin Ø 6x30
10	2	Damper
11	2	Pin Ø 6x36
12	1	Head M3
13	1	Head M4
14	1	Head M5
15	1	Head M6
16	1	Head M8
17	1	Head M10
18	1	Bush
19	1	Tie rod M3
20	1	Tie rod M4
21	1	Tie rod M5
22	1	Tie rod M6
23	1	Tie rod M8
24	1	Tie rod M10
25	1	Sleeve
26	1	Main shaft
27	2	Adjustable ring nut
28	1	Main shaft
29	1	Tool body
30	1	Power coupling plate
31	1	Spanner wrench
32	1	Adjustable ring nut
33	1	Adjustable ring nut