



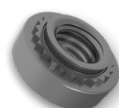
PEM® Fastening Solutions for HVAC

Durable components. Lasting results.

The PEM® innovative thin sheet fastening technology offers a complete product portfolio that meets the needs of strong, permanent threaded fasteners used in HVAC applications. Whether you want to optimize assembly, improve product reliability, or ensure better performance for your demanding residential or commercial HVAC application, you can find the right fastening solutions for structural component attachment or other assembly requirements.

Features and Benefits

- Creates strong threads in metal as thin as .020"/0.51mm
- Installs into a plain, round hole
- Can be installed using any parallel-acting squeezing force
- Offers high resistance to pushout and torque-out
- Eliminates the need for special hole preparation (e.g., chamfering or deburring)
- Maintains a flush reverse side of the sheet metal
- Eliminates loose hardware



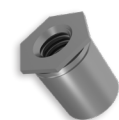
PEM® Self Clinching Nuts

Provide load-bearing threads in thin sheets with high pushout and torque-out resistances.



PEM Studs

Flush-head studs with high pushout and torque-out resistances.



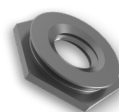
PEM® Standoffs

Thru-hole threaded and unthreaded standoffs installed with their heads flush with one surface of the mounting sheets.



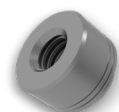
PEM® SpotFast® Fasteners

SpotFast® self-clinching fasteners create a permanent, flush joining of two sheets of metal.



PEM® Flush Nuts

PEMSERT® flush nuts are flush with both sides of the sheet.



PEM® Surface Mount Fasteners

Surface mount spacers and nuts for P.C. Board applications are available threaded and unthreaded.

Talk to an Engineer

To learn more about fastening solutions for HVAC, [Talk to a PEM® Engineer](#) today.